



## Housing Connect's School Resource Guide

*Granite School District- Elementary*



## Table of Contents

Section One: Introduction.....	Page 2
Section Two: Determining Boundaries.....	Page 3
A. Find your School District.....	Page 3
B. Find your School.....	Page 6
Section Three: Enrollment.....	Page 7
A. Enrolling a returning student.....	Page 10
B. Open enrollment Permits.....	Page 11
Section Four: Preschool Registration.....	Page 12
A. General Preschool Registration.....	Page 12
B. Full Day Preschool.....	Page 13
C. Preschool Special Education Evaluations.....	Page 13
Section Five: Kindergarten Registration .....	Page 14
Section Six: Resources.....	Page 15
A. Immunization Exemption.....	Page 15
B. Free and Reduced Lunch.....	Page 15
C. Transportation.....	Page 16
D. Fees and Waivers.....	Page 16
E. Special Education.....	Page 17
F. Before and After School.....	Page 18
Appendix: School Contact Information.....	Page 19
A. School Counselors and Social Workers.....	Page 24

## **Section 1: Introduction**

Navigating new places and unfamiliar systems can be difficult and stressful. Housing Connect understands that you want what's best for your family. We know that education provides a strong foundation for present and future opportunities. Education plays a vital role in children's development so it is important that you as the parent, have the tools you need to support your children on their educational journey. This packet is designed to help you navigate the elementary school system through the School District.

If you have questions or need assistance on anything in this packet, feel free to reach out to the Youth and Family Services Manager at 801-882-5582 or [cmeyers@housingconnect.org](mailto:cmeyers@housingconnect.org).

## **Section 2: Determining Boundaries**

If you are new to an area or your child is just entering the school system, you may be unsure of which school they are supposed to attend. The steps below will help you determine which school district your family lives in and the schools that are assigned to those boundaries. Once you have determined your boundaries, you can decide if you want to enroll your child at their “home” school or get a permit for them to attend a school outside of those boundaries. Find information on special permits on page 11

Find your school district:

1. Go to: <https://nces.ed.gov/ccd/districtsearch/>

2. Click on the words “School & District Navigator”

IES : NCES National Center for Education Statistics

Search for Public School Districts

**School & District Navigator** Public School Search Data Notes/Grant IDs Help

**District Information**

District Name: \_\_\_\_\_ NCES District ID: \_\_\_\_\_

Street Address: \_\_\_\_\_ City: (lookup) \_\_\_\_\_

State: \_\_\_\_\_ Zip Code: \_\_\_\_\_ Distance: \_\_\_\_\_ Miles from Zip

County: (lookup) \_\_\_\_\_ Phone #: \_\_\_\_\_

**Additional Characteristics**

District Types:

☒ regular ☒ component ☒ supervisory union ☒ regional

☒ state ☒ federal ☒ charter ☒ other

Number of Students: \_\_\_\_\_ or more

Number of Schools: \_\_\_\_\_ or more

**SEARCH TIP:** If you are having difficulty finding your school, try only entering the city, state, and/or a key word in the name.

**SEARCH TIP:** Use the additional characteristics fields in conjunction with any of the District Information.

Additional Characteristics should not be used if you have already entered the name of a school district.

Source: CCD public school district data for the 2019-2020, 2020-2021 school years

IES : NCES National Center for Education Statistics

Explore the Institute of Education Sciences

IES IES Centers

Home NCEE

About NCER

IES Policies and Standards

ED Data Inventory

IES Diversity Statement

NCES Statistical Standards

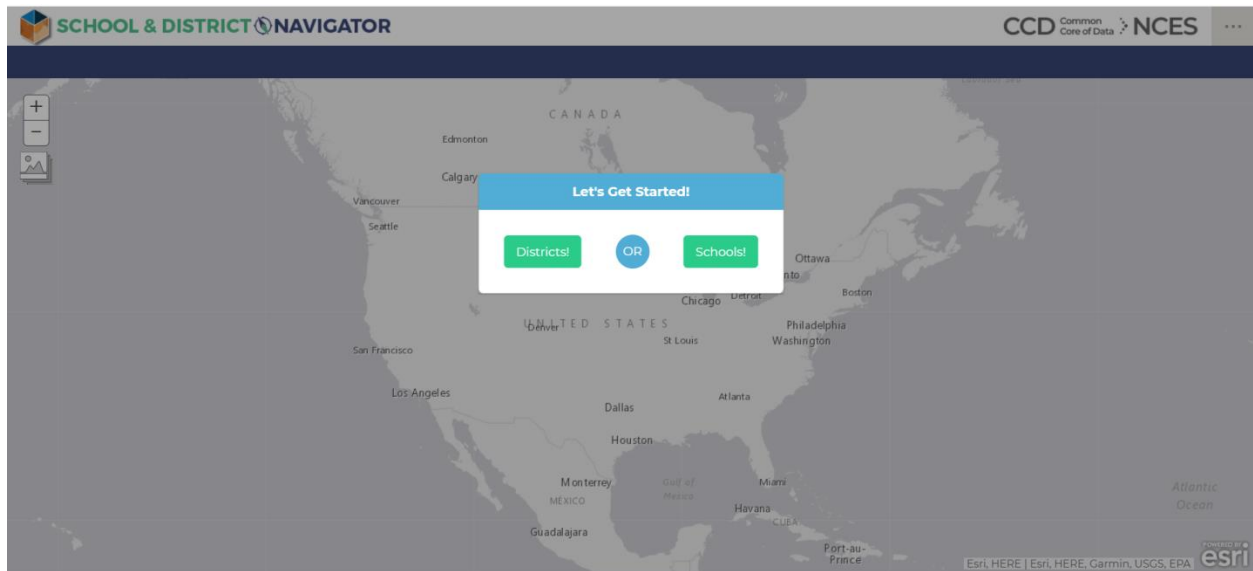
Additional Resources

ERIC

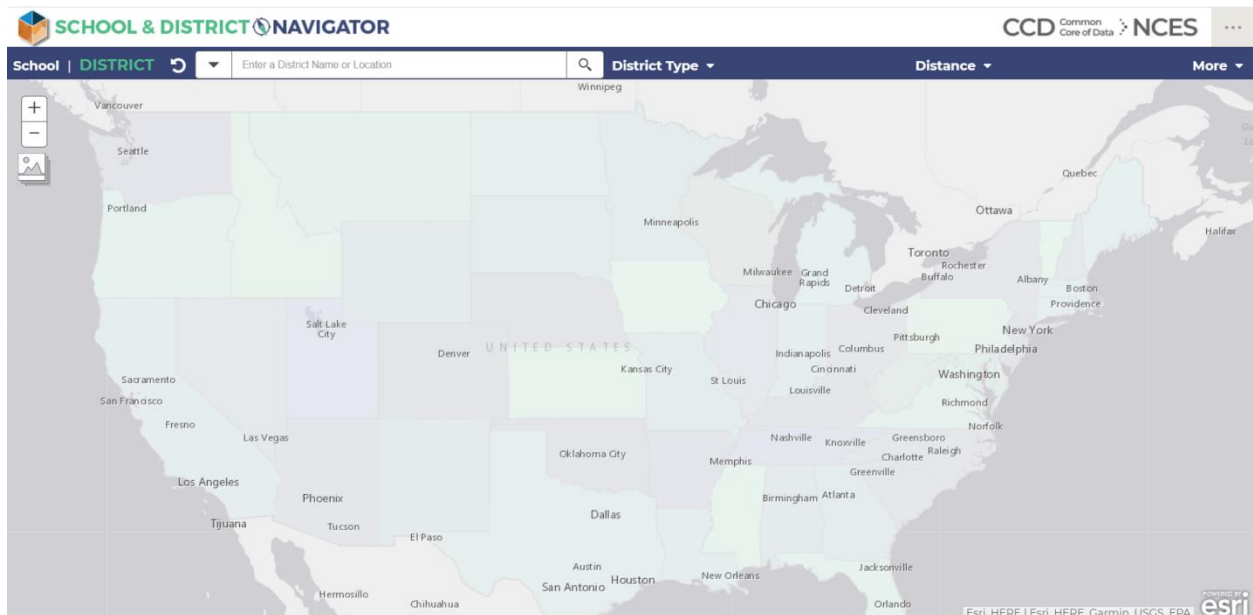
Sitemap

Organizational Chart

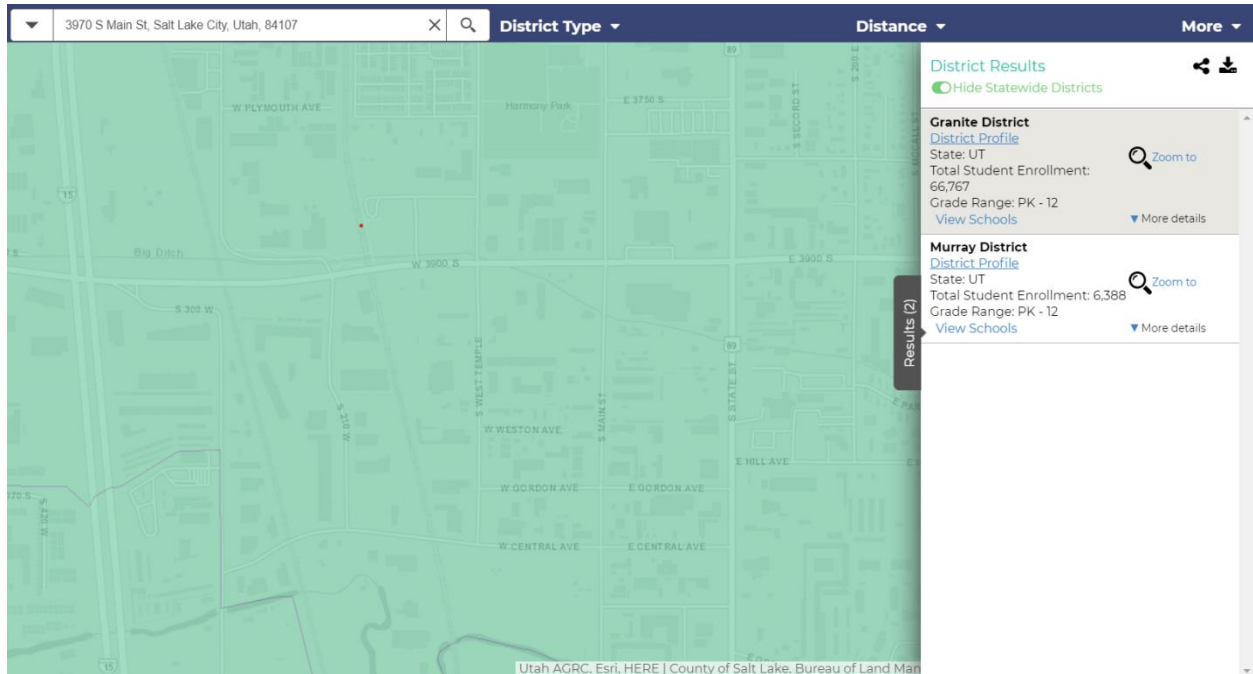
3. On the “Let’s get started tab click on the left green button labeled “Districts”



4. In the search bar, type in your home address and press the search button. (The search button is marked with a magnifying glass)



5. A box should appear on the right identifying which school district you live in.



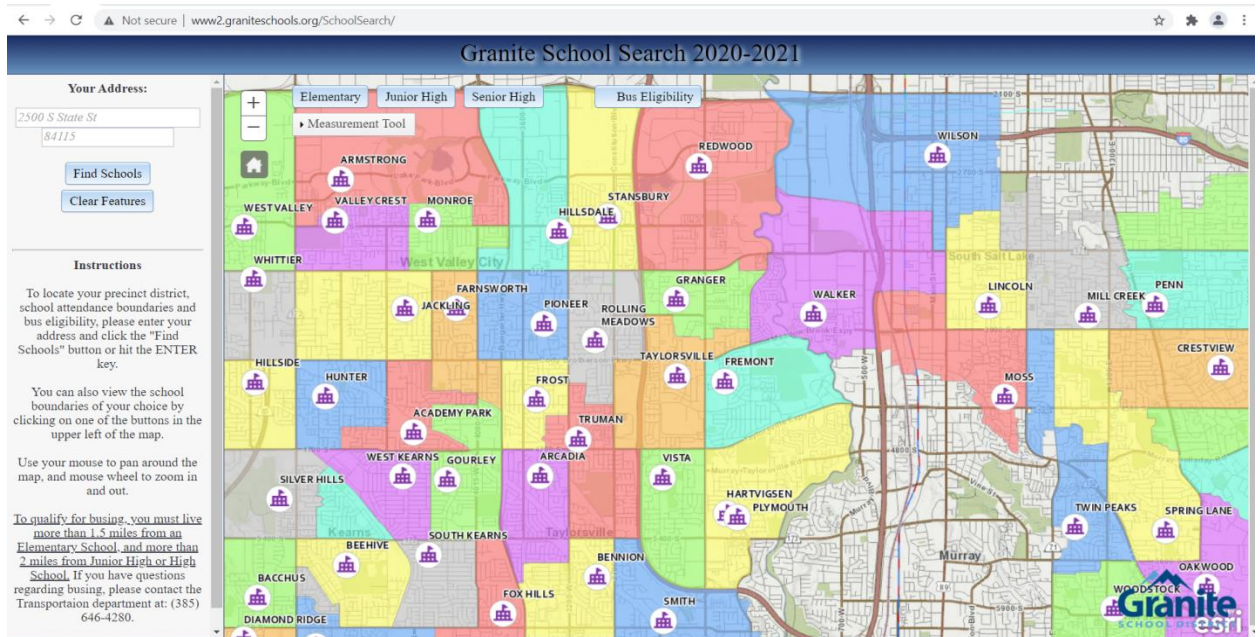
Sometimes, the website may pull up more than one eligible district, if this happens going to the potential districts websites and utilizing their school search tools is the best option.

Find your School:

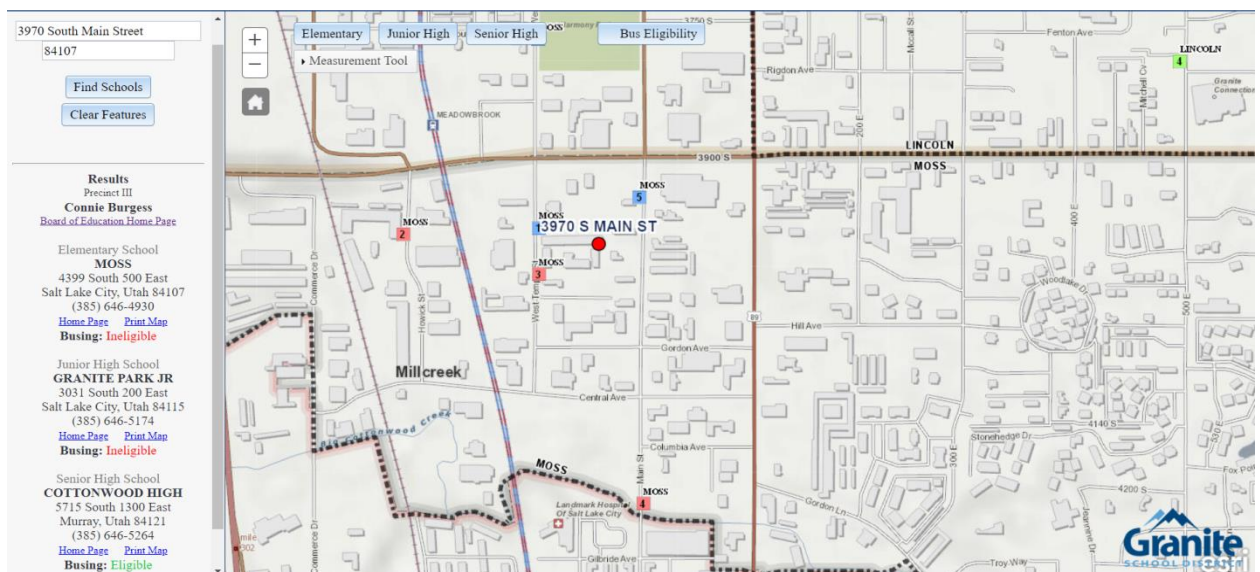
In order to determine which school boundaries you live in, open any web browser and go to:  
[www2.graniteschools.org/SchoolSearch/](http://www2.graniteschools.org/SchoolSearch/)

By default you will be greeted by a tapestry of different colors, these are school boundaries.

1. In the search bars under the section entitled “Your Address”, type in your street address in the top bar and your zip code in the second bar.



2. Click find schools.



On the left side of the screen, underneath the your address box will be the results of your search, listing the elementary, middle, and high school boundaries that you live in and whether or not you are eligible to use the school's bus system as a means of transportation to and from the school.

To help you determine if you would like your child to attend their "home" School, check out [www.greatschools.org](http://www.greatschools.org).

From this website, you can input your address and see the schools closest to you by rating. The rating a school receives is the summary of the calculation of four ratings designed to show different areas of school success: student or academic progress, college readiness, equality and test scores. Student progress measures whether students are improving over time on an individual level and academic progress measures whether the school is improving as a whole using school level data. College readiness measures how well high schools are preparing their students for success in college and careers. The rating is based on high school graduation rates, SAT and ACT performance and advanced course information. The Equity Rating is designed to measure how well a school serves the academic development of disadvantaged students and is measured by progress gaps between disadvantaged students and non disadvantaged students, how disadvantaged students are performing based on student progress, academic progress and college and career readiness. The testing score measures academic proficiency using state test scores across grades and subjects. Together the ratings make up a score from 1-10 (1 being the lowest and 10 the highest).

### **Section 3: Enrollment**

Now that you have decided which school you would like your child to attend, it is time to enroll them.

If this is your first time enrolling at a school in the Granite School District, you will need to go to the school in person in order to initiate the registration process. Regardless if you enroll in person or online, you will need to provide the following documentation:

- proof of residency (utility bill, lease agreement)
- Birth certificate (for each enrolling child)
- Immunization Record (for each enrolled child)

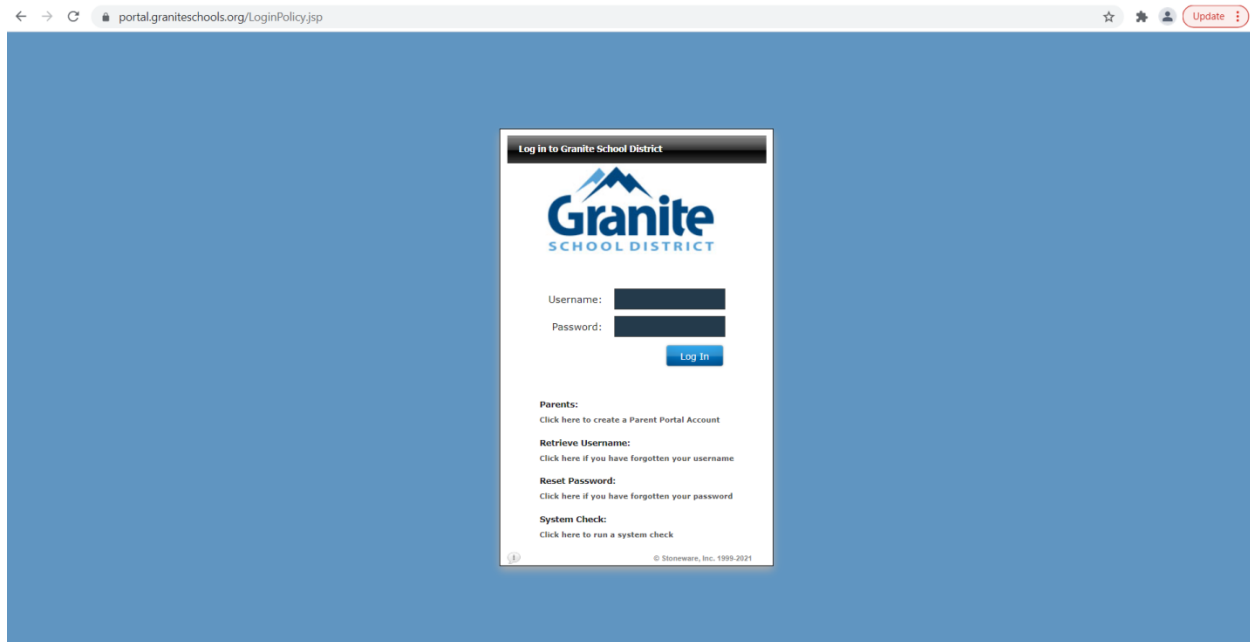
Each elementary school in the district has slightly different dates that they are open to enroll new students. Generally the dates for registering new students are the last two weeks in July. Some schools may require you to “make an appointment” to enroll. You can find the specific dates and times for your school by consulting their website or calling them directly. The websites and phone numbers for contacting the schools are listed starting on page 19.

#### Parent Portal:

After your student is enrolled in a school, and you have their student ID number, you can create a parent portal account. The Parent Portal will allow you to access information about all of your students and their schools including future registration access, payment and fee waivers, grade and attendance information as well as contact information for teachers.

In order to create a parent portal account, you must have students already enrolled in a school within the Granite School District.

1. Open any web browser
2. In the search bar type in: “portal.graniteschools.org”



3. Click create a parent portal account, you will need an email address and at least one of your children's student ID numbers.

4. Fill out the form and click create account.

5. You will be sent an email that allows you to verify your account and access the system.

### Registering a Previously Enrolled Student:

If you are currently enrolled as a student within the Granite School District, your child may have brought home papers from the school on the first day of class for you to fill out and return.

If this is not the case, your school may be participating in online registration via the Parent Portal here are the steps to follow in order to enroll.

1. Go to <https://portal.graniteschools.org>
2. Type in the username and password for your Parent Portal Account and click login.
3. Once logged in click on the icon "Registration"
4. A new tab will open, if your school is participating in online registration you will see all students attached through your parent portal for the upcoming school year.
5. On the screen you will see a list of district documents below each student name and ID, some school related forms that require a signature, and any other forms that need to be completed and then uploaded separately.
6. Click on any documents that say required, when you click on the form a preview of the document will become available, if everything is correct, click on the button "Accept and Sign".

If the school has requested an external website you will only see the name of the external document highlighted in blue. You will need to click on the words of the document and complete what they are asking. Then come back and click the "Accept and Sign" button.

7. Once you have signed a document, you will see a check mark on the far right of the row indicating that the document has been signed.
8. After signing all district and school documents and paying any associated fees, you will be able to view your student's schedule.
9. In addition to viewing your schedule you can apply for fee waivers through the online registration process.

### Open Enrollment:

If you want to enroll your children in a school outside of your home's boundaries, you will need to visit the school's main office in order to fill out an open enrollment application.

Open enrollment applications are accepted during two windows:

- December 1<sup>st</sup> through the 3<sup>rd</sup> Friday in February is the early enrollment period, and gives you the highest chance of acceptance
- After the 3<sup>rd</sup> Friday in February: Permits are considered based on the staff to student ratios, on a first come first serve basis

Once an application has been accepted, you do not need to reapply each year. You only need to reapply when your child has moved on from one level of schooling (i.e. from elementary school to middle school or from middle school to high school), your child is expelled or suspended, or the District determines that enrollment has exceeded the capacity of that school.

#### **Section 4: Preschool Registration**

If this is your first time registering for a preschool program, it is important to know whether or not you will be attending a limited admission preschool or an open admission preschool, as there are different fees associated with each. You can find this information in the table below,

or by consulting the right hand side of the registration website. (The web address is found in step one.)

Open any web browser and go to: <https://www.graniteschools.org/preschool/registration21-22/>

#### **Our Limited Admission Preschools**

Academy Park Elementary  
Farnsworth Elementary  
Gourley Elementary  
Granger Elementary  
Hillsdale Elementary  
Jackling Elementary  
Lincoln Elementary  
Magna Elementary  
Monroe Elementary  
Moss Elementary  
Pioneer Elementary  
Plymouth Elementary  
Redwood Elementary  
Rolling Meadows Elementary  
Silver Hills Elementary  
South Kearns Elementary  
Stansbury Elementary  
Taylorsville Elementary  
Walker Elementary  
West Kearns Elementary  
Western Hills Elementary  
Wilson Elementary

#### **Our Open Admission Preschools**

Arcadia Elementary  
Armstrong Elementary  
Beehive Elementary  
Bennion Elementary  
Bridger Elementary  
Copper Hills Elementary  
Cottonwood Elementary  
Driggs Elementary  
Eastwood Elementary  
Elk Run Elementary  
Fremont Elementary  
Frost Elementary  
Hillside Elementary  
Hunter Elementary  
Mill Creek Elementary  
Oakwood Elementary  
Pleasant Green Elementary  
Rosecrest Elementary  
Smith Elementary  
Spring Lane Elementary  
Truman Elementary  
Twin Peaks Elementary  
Upland Terrace Elementary  
Valley Crest Elementary  
Vista Elementary  
West Valley Elementary  
Whittier Elementary  
Woodstock Elementary  
Wright Elementary

From there you should fill out the online form. If you are enrolling a new student, you will also need to submit the child's birth certificate, Utah vaccination record and if you are enrolling in a limited admission preschool- a copy of a proof of address. If you are enrolling in an open admission preschool, you will need to pay a \$40 non-refundable registration fee and the first month's tuition (if applicable). These fees can be paid by calling **(385) 646-4672** with a credit or debit card.

If you are enrolling a child for another year of pre-school then you will not need to provide a birth certificate or their immunization record- but you will still need to fill out the registration form, pay the applicable fees and provide a proof of address.

Special education services in preschool:

In order to register for special education services for preschool you will first need to go to:

<https://www.graniteschools.org/preschool/intake/> and fill out the required form.

Once received, their office will contact you in 2 to 3 weeks to obtain more detailed information and/or schedule an assessment.

**Section 5 Kindergarten Registration**

In order to register your children for Kindergarten they must be 5 years old by September 1st of the year that you are trying to enroll them.

To begin the registration process, open any web browser and go to:  
<https://datamanager.graniteschools.org/Form/KinderPre> and fill out the basic information online.

Step 2: The school will receive your pre-registration form, contact you further with information, and arrange a time to pick up your registration packet.

Step 3: You will have an appointment time set up by the school to arrive in-person and provide the following required documents:

- Child's birth certificate
- Child's immunization records– including dates of all shots, or exception certificates
- Proof of address (examples: utility bill or rental agreement)
- Parent/guardian photo ID

If you do not have access to the internet, you may pre-register and obtain a registration packet directly at the school but you will need to call ahead to schedule an appointment with that school. The main office phone numbers are found in the back of this packet, starting on page 19.

Granite School District has 37 elementary schools offering full-day kindergarten with grant funding. As per district policy, they do not allow for “open enrollment/special permits” into the full-day kindergarten classes. You will need to live within the boundaries of one of the 37 participating schools for your child to be considered for placement in a full-day class.

You can contact your school's office to determine if they are offering full day kindergarten.

## **Section 6: Resources**

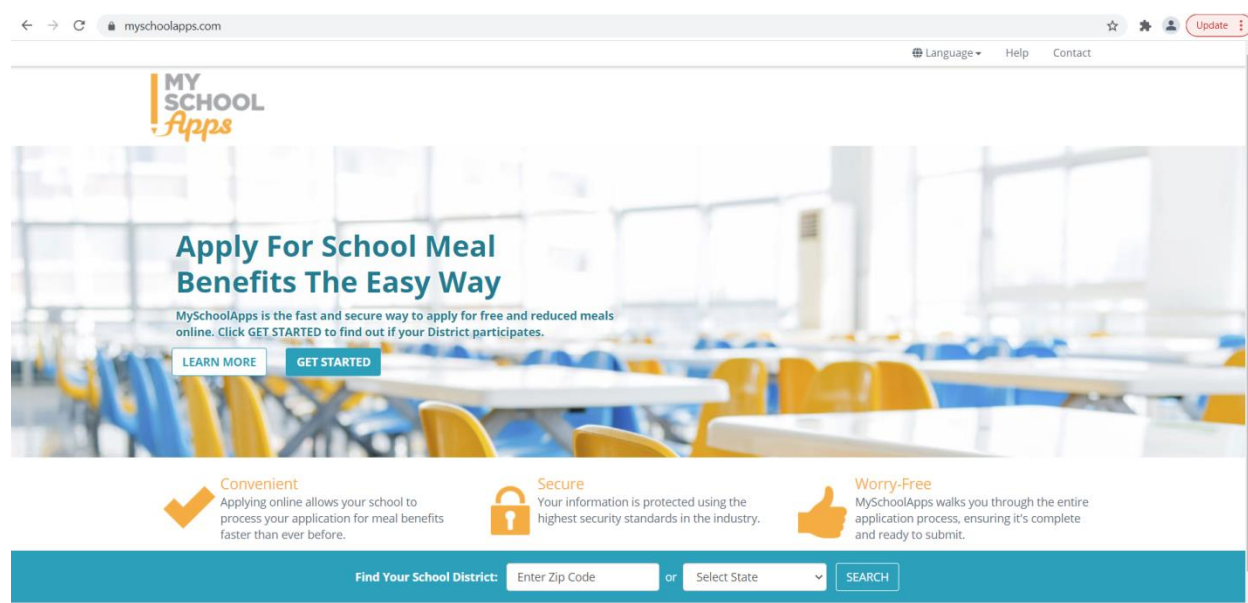
Now that your child(ren) are enrolled, there are resources that may be available to you through Granite School District:

Immunization exemptions: To receive a vaccination exemption form, the legally responsible individual who claims the exemption for the student must complete the online immunization

education module. The education module can be accessed by going to: <https://immunize.utah.gov/immunization-education-module/>. After the successful completion of the module you will be emailed a vaccination exemption form that you need to fill out and turn into the school.

Free and Reduced Lunch: Applications for free and reduced meals are able to be filled out online up to 30 days in advance of the start of the new school year. You will only need to fill out one application for your family. If you do not have internet access, you can also go to your child's school in order to obtain an application. The Federal eligibility for Free and Reduced Meals changes each school year. Because of these annual changes, a new application must be submitted each year.

To apply online go to: <https://www.myschoolapps.com/>



Click on the blue “Get Started Box”

For questions concerning the application process or free and reduced meals contact: 385-646-5506

Transportation: Your child will be eligible for bussing to school, if you live at least 1.5 miles away from your child's boundary school. If you opt to enroll your child in a different school then you are responsible for transporting your child to and from that school. **In order to obtain a school bussing schedule, you must contact your school directly.**

If transportation is an issue, the UTA may have routes that will get your children closer to their school. You can buy monthly passes for children 6-17 (or those still attending high school) for

reduced rates. The passes can be bought online at: <https://www.rideuta.com/Fares-And-Passes/Buy-A-Pass>. Look for the "Youth Monthly Pass" for local busses and TRAX access and the "Premium Youth Monthly Pass" if your children also need access to the FRONTRUNNER.

#### Fees:

The following table lists the maximum amounts that may be charged per pupil for each activity, class, or athletics participation. **Actual Fees are determined by the local schools!**

Granite School District	
<b>DRAFT 3/9/22 2022-2023 Elementary School Fee Schedule</b>	
<b>Fee Amounts and Spend Plans</b> - All fees listed on this schedule are the maximum amounts approved by the Board of Education that a school may charge per pupil for participation in the named activity, class, group, or team. The types of expenditures funded with student fees include ancillary personnel costs, educational services, employee training, professional services, technical services, student travel, advertising services, printing services, activity and student supplies, student food, technology supplies, equipment and facility enhancements, and club dues. Planned expenditures vary by program and school due to the unique needs and specific plans made at each school. Prior to registration, the fee amounts and associated spend plans approved by the principal for each program at each school are published online at <a href="http://schoolfees.graniteschools.org">schoolfees.graniteschools.org</a> . Parents are encouraged to refer to their school's fee schedule for detailed fee and spend plan information. For school activities that involve tryouts, participants must be selected before fees are assessed.	
<b>Extracurricular</b>	<b>Maximum amounts that may be charged</b>
<b>Before and After School Activities</b>	
Art Club	\$45.00
Band / Orchestra	
Instruction	<b>\$140.00 \$160.00</b>
Materials and Instrument Rental	cost of item
Chess Club	\$25.00
Choir / Music Club	\$45.00
Dance Club	\$45.00
Drama / Stage Crew Club	\$45.00
Foreign Language Club	\$140.00
STEM Club	\$100.00
<hr/>	
Other Extracurricular / Athletic Clubs	\$50.00
<b>Other Admissions to Off Campus Events (Not including applicable sales tax) Outside of regular school day</b>	<b>\$60.00</b>
Kindergarten Academy	\$280.00 per month
<hr/>	
<b>Maximum Fee Cap</b>	<b>\$400.00</b>
This amount is the maximum a student will be required to pay or voluntarily individually fundraise for each school year. The maximum fee cap does not apply to Instrument	
<b>Schedule of Non-Waivable Charges</b> - The Board authorizes fines for damage caused to district property and for violating rules of conduct. Because administrative penalties do not implicate participation in school sponsored activities, these fines appear with other non-waivable charges on the Board approved Schedule of Non-Waivable Charges rather than on this Fee Schedule.	
<hr/>	
<b>This Fee Schedule was approved by the Granite Board of Education on .</b>	

\*Please note: The fees schedule above is the final draft for the school year 2022-2023.

Fee Waivers: When enrolling at any school in the Granite School District you are able to fill out the application for a fee waiver. You will need to bring either: the three most recent pay stubs for everyone working in the household, a letter from Workforce Services which states you are on food stamps, or your last year's tax return. If your application is accepted all of the fees mentioned above will be waived.

Special Education Services (Section 504 Plans and IEP's)

Section 504 is the part of the Rehabilitation Act of 1973 which applies to persons with disabilities. Section 504 is a civil rights act protecting the civil and constitutional rights of persons with disabilities.

Section 504 states: “No otherwise qualified individual with a disability ... shall, solely by reason of her or his disability, be excluded from the participation in, be denied the benefits of, or be subjected to any discrimination under any program or activity receiving Federal financial assistance.”

An IEP is an “Individualized Education Plan” It is a legal document that identifies the special education instruction, support and services to help your child succeed in school.

For Special Education Services you may ask any teacher, administrator or counselor to request special educational services or an evaluation.

Once you have made the request, they will provide you with any paperwork and directions to continue the process.

#### Utah Parent Center Information

<https://utahparentcenter.org/projects/districts/granite/>

Parent Consultant Serving Families in Granite School District

Email: [cynthia@utahparentcenter.org](mailto:cynthia@utahparentcenter.org)

Phone Number: 385-646-4190 or 801-833-3825

The Utah Parent Center has partnered with Granite School District to provide free assistance to families of children with special educational needs.

If your child has special needs, so do you! The Parent Consultant serving families in Granite School District offers: Training, Information, Referrals and Assistance.

These services are offered to parents through the provision of one-on-one consultations by phone or in person, and group workshops and presentations.

#### Before School Programs:

Every elementary school within the district serves breakfast. You will need to confirm with your child’s school the exact time breakfast is served. It is typically served ½ an hour before school starts.

#### After School Programs:

Most schools in the district have multiple after school opportunities be they athletic, artistic, or academic in nature. The best ways to find out about them are to check your school's website and to keep an eye out for information brought home by your children. The school's websites are listed starting on page 19.

## **Appendix I. School Contact Information**

### **Holladay Elementary Schools**

<b>School Name</b>	<b>Address</b>	<b>Phone Number</b>	<b>Website</b>
--------------------	----------------	---------------------	----------------

Cottonwood	5205 S Holladay Boulevard (2600 E) Holladay, UT 84117-7126	385-646-4798	<a href="https://schools.graniteschools.org/cottonwood/">https://schools.graniteschools.org/cottonwood/</a>
Crestview	2100 E Lincoln Lane (4350 S) Holladay, UT 84124-2747	385-646-4804	<a href="https://schools.graniteschools.org/crestview/">https://schools.graniteschools.org/crestview/</a>
Howard R. Driggs	4340 South 2700 East Holladay, UT 84124-3750	385-646-4810	<a href="https://schools.graniteschools.org/driggs/">https://schools.graniteschools.org/driggs/</a>
Oakwood	5815 S Highland Drive (1900 E) Holladay, UT 84121-1325	385-646-4942	<a href="https://schools.graniteschools.org/oakwood/">https://schools.graniteschools.org/oakwood/</a>
Spring Lane	5315 South 1700 East Holladay, UT 84117-7499	385-646-4906	<a href="https://schools.graniteschools.org/springlane/">https://schools.graniteschools.org/springlane/</a>

### Kearns Elementary Schools

School Name	Address	Phone Number	Website
Bacchus	5925 South 5975 West Kearns, UT 84118-7730	385-646-4762	<a href="https://schools.graniteschools.org/bacchus/">https://schools.graniteschools.org/bacchus/</a>
Beehive	655 South 5220 West Kearns, UT 84118-7500	385-646-4768	<a href="https://schools.graniteschools.org/beehive/">https://schools.graniteschools.org/beehive/</a>
Gourley	4905 South 4300 West Kearns, UT 84118-4817	385-646-4846	<a href="https://schools.graniteschools.org/gourley/">https://schools.graniteschools.org/gourley/</a>
South Kearns	5544 S 4385 W Kearns, UT 84118-5514	385-646-5026	<a href="https://schools.graniteschools.org/southkearns/">https://schools.graniteschools.org/southkearns/</a>
West Kearns	4900 South 4620 West Kearns, UT 84118-6299	385-646-5073	<a href="https://schools.graniteschools.org/westkearns/">https://schools.graniteschools.org/westkearns/</a>
Western Hills	5190 S Heath Avenue (5030 W) Kearns, UT 84118-6878	385-646-5091	<a href="https://schools.graniteschools.org/westernhills/">https://schools.graniteschools.org/westernhills/</a>

### Magna Elementary Schools

<b>School Name</b>	<b>Address</b>	<b>Phone Number</b>	<b>Website</b>
Copperhills	7635 West 3715 South Magna, UT 84044-2399	385-646-4792	<a href="https://schools.graniteschools.org/copperhills/">https://schools.graniteschools.org/copperhills/</a>
Elk Run	3550 S Helen Drive Magna, UT 84044-2769	385-646-4786	<a href="https://schools.graniteschools.org/elkrun/">https://schools.graniteschools.org/elkrun/</a>
Lake Ridge	7400 West 3400 South Magna, UT 84044-2123	385-646-4888	<a href="https://schools.graniteschools.org/elkrun/">https://schools.graniteschools.org/elkrun/</a>
Magna	8500 West 3100 South Magna, UT 84044-1729	385-646-4900	<a href="https://schools.graniteschools.org/magna/">https://schools.graniteschools.org/magna/</a>
Pleasant Green	8201 West 2700 South Magna, UT 84044-1323	385-646-4972	<a href="https://schools.graniteschools.org/pleasantgreen/">https://schools.graniteschools.org/pleasantgreen/</a>

### **Murray Elementary Schools**

<b>School Name</b>	<b>Address</b>	<b>Phone Number</b>	<b>Website</b>
Twin Peaks	5325 South 1045 East Murray, UT 84117-7229	385-646-5049	<a href="https://schools.graniteschools.org/twinpeaks/">https://schools.graniteschools.org/twinpeaks/</a>
Woodstock	6015 South 1300 East, Murray, UT 84121-1717	385-646-5108	<a href="https://schools.graniteschools.org/woodstock/">https://schools.graniteschools.org/woodstock/</a>

### **Salt Lake City Elementary Schools**

<b>School Name</b>	<b>Address</b>	<b>Phone Number</b>	<b>Website</b>
Eastwood	3305 S Wasatch Boulevard (3560 East) Salt Lake City, UT 84109-3262	385-646-4816	<a href="https://schools.graniteschools.org/eastwood/">https://schools.graniteschools.org/eastwood/</a>
Gearld L. Wright	6760 West 3100 South Salt Lake City, UT 84128-5602	385-646-5480	<a href="https://schools.graniteschools.org/wright/">https://schools.graniteschools.org/wright/</a>
Lincoln	450 East 3700 South Salt Lake City, UT 84115-4634	385-646-4894	<a href="https://schools.graniteschools.org/lincoln/">https://schools.graniteschools.org/lincoln/</a>

Mill Creek	3761 South 1100 East Salt Lake City, UT 84106-2468	385-646-4912	<a href="https://schools.graniteschools.org/millcreek/">https://schools.graniteschools.org/millcreek/</a>
Morningside	4170 South 3000 East Salt Lake City, UT 84124-3075	385-646-4924	<a href="https://schools.graniteschools.org/morningside/">https://schools.graniteschools.org/morningside/</a>
Moss	<u>4399 South 500 East, Salt Lake City, UT 84107-2867</u>	385-646-4930	<a href="https://schools.graniteschools.org/moss/">https://schools.graniteschools.org/moss/</a>
Oakridge	4325 S Jupiter Drive (3755 E) Salt Lake City, UT 84124-3906	385-646-4936	<a href="https://schools.graniteschools.org/oakridge/">https://schools.graniteschools.org/oakridge/</a>
Penn	1670 E Siggard Drive (3705 S) Salt Lake City, UT 84106-3240	385-646-4960	<a href="https://schools.graniteschools.org/penn/">https://schools.graniteschools.org/penn/</a>
Rosecrest	2420 E Fisher Lane (2935 S) Salt Lake City, UT 84109-2504	385-646-5002	<a href="https://schools.graniteschools.org/rosecrest/">https://schools.graniteschools.org/rosecrest/</a>
Silver Hills	5770 West 5100 South Salt Lake City, UT 84118-8410	385-646-5014	<a href="https://schools.graniteschools.org/silverhills/">https://schools.graniteschools.org/silverhills/</a>
Upland Terrace	3700 South 2860 East Salt Lake City, 84109-3514	385-646-5055	<a href="https://schools.graniteschools.org/uplandterrace/">https://schools.graniteschools.org/uplandterrace/</a>
Walker	3751 South 900 West Salt Lake City, UT 84119	385-646-4996	<a href="https://schools.graniteschools.org/walker/">https://schools.graniteschools.org/walker/</a>
Woodrow Wilson	2567 S Main Street (1 E) Salt Lake City, UT 84115-3044	385-646-5102	<a href="https://schools.graniteschools.org/wilson/">https://schools.graniteschools.org/wilson/</a>

## Taylorsville Elementary Schools

School Name	Address	Phone Number	Website
-------------	---------	--------------	---------

Arcadia	3461 West 4850 South Taylorsville, UT 84129-2833	385-646-4750	<a href="https://www.graniteschools.org/schools/elementary-schools/">https://www.graniteschools.org/schools/elementary-schools/</a>
Benion	5775 S Sierra Grande Drive (2940 W) Taylorsville, UT 84129-2633	385-646-4774	<a href="https://schools.graniteschools.org/bennion/">https://schools.graniteschools.org/bennion/</a>
Calvin Smith	2150 West 6200 South Taylorsville, UT 84129-1473	385-646-5020	<a href="https://schools.graniteschools.org/calvinsmith/">https://schools.graniteschools.org/calvinsmith/</a>
Foxhills	3775 West 6020 South Taylorsville, UT 84129-3753	385-646-4828	<a href="https://schools.graniteschools.org/foxhills/">https://schools.graniteschools.org/foxhills/</a>
Fremont	4249 S Atherton Drive (1425 W) Taylorsville, UT 84123-2225	385-646-4834	<a href="https://schools.graniteschools.org/fremont/">https://schools.graniteschools.org/fremont/</a>
Plymouth	5220 South 1470 West, Taylorsville, UT 84123-4810	385-646-4978	<a href="https://schools.graniteschools.org/plymouth/">https://schools.graniteschools.org/plymouth/</a>
Taylorsville	2010 West 4230 South Taylorsville, UT 84129-5428	385-646-5038	<a href="https://schools.graniteschools.org/taylorsville/">https://schools.graniteschools.org/taylorsville/</a>
Vista	4925 South 2200 West Taylorsville, UT 84129-1662	385-646-5067	<a href="https://schools.graniteschools.org/vista/">https://schools.graniteschools.org/vista/</a>

## West Jordan Elementary Schools

School Name	Address	Phone Number	Website
Jim Bridger	5368 W Cyclamen Way (6300 S) West Jordan, UT 84084-5939	385-646-4780	<a href="https://schools.graniteschools.org/bridger/">https://schools.graniteschools.org/bridger/</a>

## West Valley Elementary Schools

Academy Park	4580 W Westpoint Drive (4575 S) West Valley, UT 84120	385-646-4750	<a href="https://schools.graniteschools.org/academypark/">https://schools.graniteschools.org/academypark/</a>
--------------	---	--------------	---

Armstrong Academy	5194 W Highbury Park Way, West Valley City, UT 84120	385-646-5284	<a href="https://schools.graniteschools.org/armstrong/">https://schools.graniteschools.org/armstrong/</a>
Diamond Ridge	6034 W Mill Valley Lane (6365 S) West Valley, UT 84118-9315	385-646-4858	<a href="https://schools.graniteschools.org/diamondridge/">https://schools.graniteschools.org/diamondridge/</a>
Farnsworth, Philo T.	3751 South 4225 West West Valley, UT 84120-3126	385-646-4822	<a href="https://schools.graniteschools.org/farnsworth/">https://schools.graniteschools.org/farnsworth/</a>
Granger	3700 South 1950 West West Valley, UT 84119-3891	385-646-4852	<a href="https://schools.graniteschools.org/granger/">https://schools.graniteschools.org/granger/</a>
Hillsdale	<u>3275 West 3100 South, West Valley, UT 84119</u>	385-646-4864	<a href="https://schools.graniteschools.org/hillsdale/">https://schools.graniteschools.org/hillsdale/</a>
Hillside	4283 South 6000 West West Valley, UT 84128-6510	385-646-4870	<a href="https://schools.graniteschools.org/hillside/">https://schools.graniteschools.org/hillside/</a>
Hunter	4351 South 5400 West West Valley, UT 84120-4644	385-646-4876	<a href="https://schools.graniteschools.org/hunter/">https://schools.graniteschools.org/hunter/</a>
Jackling	3760 South 4610 West West Valley, UT 84120-3702	385-646-4882	<a href="https://schools.graniteschools.org/jackling/">https://schools.graniteschools.org/jackling/</a>
Monroe	4450 West 3100 South West Valley, UT 84120-1510	385-646-4918	<a href="https://schools.graniteschools.org/monroe/">https://schools.graniteschools.org/monroe/</a>
Orchard, Douglas T.	6744 West 3800 South, West Valley, UT 84128-3510	385-646-4954	<a href="https://schools.graniteschools.org/orchard/">https://schools.graniteschools.org/orchard/</a>
Pioneer	3860 South 3380 West West Valley, UT 84119-4442	385-646-4966	<a href="https://schools.graniteschools.org/pioneer/">https://schools.graniteschools.org/pioneer/</a>
Redwood	<u>2650 S Redwood Road (1700 W) West Valley, UT 84119-2318</u>	385-646-4984	<a href="https://schools.graniteschools.org/redwood/">https://schools.graniteschools.org/redwood/</a>
Rolling Meadows	2950 W Whitehall Drive (3985 S) West Valley, UT 84119-4862	385-646-4990	<a href="https://schools.graniteschools.org/rollingmeadows/">https://schools.graniteschools.org/rollingmeadows/</a>

Stansbury	3050 South 2700 West West Valley, UT 84119-2928	385-646-5032	<a href="https://schools.graniteschools.org/stansbury/">https://schools.graniteschools.org/stansbury/</a>
Truman, Harry S.	4639 South 3200 West West Valley, UT 84119-5943	385-646-5044	<a href="https://schools.graniteschools.org/truman/">https://schools.graniteschools.org/truman/</a>
Valley Crest	5240 West 3100 South West Valley, UT 84120-1425	385-646-5061	<a href="https://schools.graniteschools.org/valleycrest/">https://schools.graniteschools.org/valleycrest/</a>
West Valley	6049 W Brud Drive (3100 S) West Valley, UT 84128-7057	385-646-5079	<a href="https://schools.graniteschools.org/westvalley/">https://schools.graniteschools.org/westvalley/</a>
Whittier	3585 South 6000 West West Valley, UT 84128-2674	385-646-5096	<a href="https://schools.graniteschools.org/whittier/">https://schools.graniteschools.org/whittier/</a>

## Appendix II: School Counselors and Social Workers

Each school in Granite school district has personnel specifically assigned to help you and your children establish healthy development and create positive boundaries around social, emotional and psychological health. These staff include social workers, school psychologists, speech language pathologists, and more.

Social workers and psychologists can provide counseling while providing social, emotional, and psychological support, they also help with IEP's and other accommodations, and can give referrals to outside resources.

Speech language pathologists help students with communication delays. They can help your children with literacy, fluency, articulation, and social communication issues.

Guidance Counselors help with academic and behavioral challenges.

Below is a list of all of the service providers within the Elementary schools in the district so you can easily contact them as needed. If a phone number is not listed, you can call your school's main office to determine the best way to contact them or reach out to them via email.

School	Title	Name	Phone Number	Email
Academy Park	Social Worker	Denni Dayley	385-646-0693	<a href="mailto:dcdayley@graniteschools.org">dcdayley@graniteschools.org</a>
Academy Park	Speech Language Pathologist	Allison McLaughlin	385-646-8328	<a href="mailto:amclaughlin@graniteschools.org">amclaughlin@graniteschools.org</a>
Academy Park	School Psychologist	Taylor Jackson	385-646-1649	<a href="mailto:twjackson@graniteschools.org">twjackson@graniteschools.org</a>
Arcadia	Speech Language Pathologist	Amy Jewett	385-646-5902	<a href="mailto:ajewett@graniteschools.org">ajewett@graniteschools.org</a>
Arcadia	Social Worker	Craig Kaluhikaua	(385) 646-8175	<a href="mailto:ckaluhikaua@graniteschools.org">ckaluhikaua@graniteschools.org</a>
Arcadia	School Psychologist	Mary Dennis	385-646-5854	<a href="mailto:mdennis@graniteschools.org">mdennis@graniteschools.org</a>
Armstrong Academy	Speech Language Pathologist	Linda Singley	385.646.5284	<a href="mailto:lholfeltz@graniteschools.org">lholfeltz@graniteschools.org</a>
Armstrong Academy	Psychologist	Tyler Storey	385.646.5284	<a href="mailto:tjstorey@graniteschools.org">tjstorey@graniteschools.org</a>
Armstrong Academy	School Social Worker	Stacie Cottrell	385.646.5284	<a href="mailto:secottrell@graniteschools.org">secottrell@graniteschools.org</a>

Bacchus, Thomas W.	Social Worker	Kylie Aloï		<a href="mailto:kaloi@graniteschools.org">kaloi@graniteschools.org</a>
Bacchus, Thomas W.	Speech Therapist	Amy Jewett	385-646-5902	<a href="mailto:ajewett@graniteschools.org">ajewett@graniteschools.org</a>
Bacchus, Thomas W.	School Psychologist	Sophia Pontello		srpontello@graniteschools.org
Beehive	Social Worker	Cailey Green	385-646-4768	<a href="mailto:cmgreen@graniteschools.org">cmgreen@graniteschools.org</a>
Beehive	Speech And Language Pathologist	Julia Austin-Prime	385-646-4768	<a href="mailto:jraustin-prime@graniteschools.org">jraustin-prime@graniteschools.org</a>
Beehive	School Psychologist	Molly Johnson	385-646-4768	
Bennion	Social Worker	Genevieve Strattman	(385) 646-1535	gstrattman@graniteschools.org
Bennion	School Psychologist	Gary Leu	(385) 646-8084	<a href="mailto:gleu@graniteschools.org">gleu@graniteschools.org</a>
Bridger, Jim	Social Worker	None currently listed	385-646-4780	
Bridger, Jim	School Psychologist			
Copper Hills	Social Worker	Bronson Black	385-646-1841	<a href="mailto:bblack@graniteschools.org">bblack@graniteschools.org</a>
Copper Hills	Speech Language Pathologist	Kristi Shulsen	385-646-4792	<a href="mailto:kpshulsen@graniteschools.org">kpshulsen@graniteschools.org</a>

Copper Hills	Social Worker	Ariela Robles	385-646-4792	<a href="mailto:acrobles@graniteschools.org">acrobles@graniteschools.org</a>
Copper Hills	School Psychologist	Lauren Lees	385-646-4792	<a href="mailto:leles@graniteschools.org">leles@graniteschools.org</a>
Copper Hills	After School Program Director	Maggie Despain		<a href="mailto:mdespain@slco.org">mdespain@slco.org</a>
Cottonwood	Social Worker	Julia Shively	385-646-4798	<a href="mailto:jsshively@graniteschools.org">jsshively@graniteschools.org</a>
Cottonwood	School Psychologist	Autumn Talbot-Cisneros	385-646-4804	<a href="mailto:astalbott-cisneros@graniteschools.org">astalbott-cisneros@graniteschools.org</a>
Cottonwood	Speech Pathologist	Caroline Clark		<a href="mailto:cclark@graniteschools.org">cclark@graniteschools.org</a>
Crestview	Social Worker	Aaron Orlowski	385-646-8809	<a href="mailto:ajorlowski@graniteschools.org">ajorlowski@graniteschools.org</a>
Crestview	School Psychologist	Katie Young	385-646-5842	<a href="mailto:kjyoung@graniteschools.org">kjyoung@graniteschools.org</a>
Diamond Ridge	Social Worker	Ariela Robles	385-646-4858	<a href="mailto:acrobles@graniteschools.org">acrobles@graniteschools.org</a>
Diamond Ridge	Speech Therapist	Janette Albertson	385-646-4858	<a href="mailto:jalbertson@graniteschools.org">jalbertson@graniteschools.org</a>
Diamond Ridge	School Psychologist	Stephen Prasad	385-646-4858	<a href="mailto:spasad@graniteschools.org">spasad@graniteschools.org</a>
Driggs, Howard R.	Social Worker	Kelsey Corr	385-646-0635	<a href="mailto:kmcorr@graniteschools.org">kmcorr@graniteschools.org</a>
Driggs, Howard R.	Speech Language Pathologist	Cassandra Hansen	385-646-5894	<a href="mailto:clhansen1@graniteschools.org">clhansen1@graniteschools.org</a>
Driggs, Howard R.	School Psychologist	Stephanie Alberico	385-646-5801	<a href="mailto:salberico@graniteschools.org">salberico@graniteschools.org</a>

Eastwood	School Psychologist	Katie Young	385-646-4816	<a href="mailto:kjyoung@graniteschools.org">kjyoung@graniteschools.org</a>
Eastwood	Social Worker	Chelsea Davenport		<a href="mailto:cldavenport@graniteschools.org">cldavenport@graniteschools.org</a>
Eastwood	Speech Language Pathologist	Irene Karren		<a href="mailto:idkarren@graniteschools.org">idkarren@graniteschools.org</a>
Elk Run	Speech Language Pathologist	Nisha Mendez	385-646-1651	<a href="mailto:nhmendes@graniteschools.org">nhmendes@graniteschools.org</a>
Elk Run	School Psychologist	Lauren Baker	385-646-2125	
Elk Run	Parent Liaison	Elizabeth Martinez	385-646-2810	<a href="mailto:ermartinez@graniteschools.org">ermartinez@graniteschools.org</a>
Farnsworth, Philo T.	School Psychologist	Rachel Graham	385-646-4822	<a href="mailto:ragraham@graniteschools.org">ragraham@graniteschools.org</a>
Farnsworth, Philo T.	Social Worker	Alison Moore	385-646-4822	<a href="mailto:apmoore@graniteschools.org">apmoore@graniteschools.org</a>
Farnsworth, Philo T.	Speech Language Pathologist	Jill Sparks	385-646-4822	<a href="mailto:jhsparks1@graniteschools.org">jhsparks1@graniteschools.org</a>
Fox Hills	Social Worker	Wendy Hutchinson	(385) 646-4828	<a href="mailto:whutchinson@graniteschools.org">whutchinson@graniteschools.org</a>
Fox Hills	Speech Language Pathologist	Nicole Stenquist	(385) 646-4828	<a href="mailto:nastenquist@graniteschools.org">nastenquist@graniteschools.org</a>
Fox Hills	School Psychologist	Heather Creel	(385) 646-4828	<a href="mailto:hcreel@graniteschools.org">hcreel@graniteschools.org</a>

Fremont, John C.	Speech Language Pathologist	Rebecca Miller	385-646-4834	<a href="mailto:rmiller@graniteschools.org">rmiller@graniteschools.org</a>
Fremont, John C.	School Psychologist	Stephanie Bailey	385-646-4834	<a href="mailto:sabailey@graniteschools.org">sabailey@graniteschools.org</a>
Fremont, John C.	School Counselor	Diana Lehwalder	385-646-4834	<a href="mailto:dlehwalder@graniteschools.org">dlehwalder@graniteschools.org</a>
Frost, Robert	Speech Pathologist	Noel Lee	385-646-1419	<a href="mailto:nrlee@graniteschools.org">nrlee@graniteschools.org</a>
Frost, Robert	School Psychologist	Autumn Talbott-Cisneros	385-646-1638	<a href="mailto:astalbott-cisneros@graniteschools.org">astalbott-cisneros@graniteschools.org</a>
Frost, Robert	School Social Worker	Cassandra Hutchinson	385-646-2891	<a href="mailto:chutchinson1@graniteschools.org">chutchinson1@graniteschools.org</a>
Gourley, David	Social Worker	Nicolette Clayton	385-646-4846	<a href="mailto:nrclayton@graniteschools.org">nrclayton@graniteschools.org</a>
Gourley, David	School Psychologist	Megan Wall	385-646-4846	<a href="mailto:mdwall@graniteschools.org">mdwall@graniteschools.org</a>
Granger	Social Worker	Emilie Havili	385-646-2202	<a href="mailto:ehavili1@graniteschools.org">ehavili1@graniteschools.org</a>
Granger	School Psychologist	Julie Galli	385-646-4852	<a href="mailto:jthomas@graniteschools.org">jthomas@graniteschools.org</a>
Granger	Family Center Coordinator	Gabby Dardon	385-646-9633	<a href="mailto:gdardon@graniteschools.org">gdardon@graniteschools.org</a>
Hillsdale	School Psychologist	Molly Johnson	385-646-4864	<a href="mailto:mtjohnson@graniteschools.org">mtjohnson@graniteschools.org</a>

Hillsdale	Social Worker	Tyler Robinson	385-646-8837	<a href="mailto:tmrobinson@graniteschools.org">tmrobinson@graniteschools.org</a>
Hillsdale	Parent Liaison and Parent Center Coordinator	Esmerelda Cortez	385-646-4864	<a href="mailto:ecortes@graniteschools.org">ecortes@graniteschools.org</a>
Hillside	School Counselor	Christine Nielsen	385-646-4870	<a href="mailto:cnielsen@graniteschools.org">cnielsen@graniteschools.org</a>
Hillside	School Psychologist	Jessica Wassink	385-646-4870	<a href="mailto:jmwassink@graniteschools.org">jmwassink@graniteschools.org</a>
Hillside	Family Engagement Center Coordinator	Jessica Martinez	385-646-4870	<a href="mailto:jgmartinez@graniteschools.org">jgmartinez@graniteschools.org</a>
Hunter	Social Worker	Trisha Haslam	385-646-2012	<a href="mailto:thaslam@graniteschools.org">thaslam@graniteschools.org</a>
Hunter	School Psychologist	Krystine Morris	385-646-9346	<a href="mailto:kajolstead@graniteschools.org">kajolstead@graniteschools.org</a>
Hunter	School Psychologist	Sophia Pontello	(385) 646-4876	<a href="mailto:srpontello@graniteschools.org">srpontello@graniteschools.org</a>
Jackling	Speech Language Pathologist	Caroline Frederick	385-646-4882	<a href="mailto:cclark@graniteschools.org">cclark@graniteschools.org</a>
Jackling	School Psychologist	Taylor Arney	385-646-4882	<a href="mailto:tmarney@graniteschools.org">tmarney@graniteschools.org</a>
Lake Ridge	School Psychologist	Rachel Butler	385-646-1646	<a href="mailto:rrbutler@graniteschools.org">rrbutler@graniteschools.org</a>
Lake Ridge	Social Worker	Chelsea Davenport		<a href="mailto:cldavenport@graniteschools.org">cldavenport@graniteschools.org</a>

Lincoln	Social Worker	Jennifer Stone	(385) 646-1289	<a href="mailto:jastone@graniteschools.org">jastone@graniteschools.org</a>
Lincoln	School Psychologist	Hayley Herrington	(385) 646-1289	<a href="mailto:hmherrington@graniteschools.org">hmherrington@graniteschools.org</a>
Magna	Social Worker	Shandi Engman	385-646-4900	<a href="mailto:sengman@graniteschools.org">sengman@graniteschools.org</a>
Magna	School Psychologist	Shay Lyksett	385-646-4900	<a href="mailto:smlyksett@graniteschools.org">smlyksett@graniteschools.org</a>
Magna	After School Coordinator and Parent Liaison	Connie Paredes-Pozas	385-646-4900	<a href="mailto:mparedes-pozas@slco.org">mparedes-pozas@slco.org</a>
Magan	Family Engagement Center Coordinator	Gregoria Torres	385-646-4903	<a href="mailto:itorres1@graniteschools.org">itorres1@graniteschools.org</a>
Magna	After School Coordinator & Parent Liaison	Taulia Van Der Beek		<a href="mailto:tvanderbeek@slco.org">tvanderbeek@slco.org</a>
Monroe	Social Worker	McKenna Sheen	(385) 646-4918	<a href="mailto:kosborne@graniteschools.org">kosborne@graniteschools.org</a>
Monroe	School Psychologist	Khio Ly	385-646-8513	<a href="mailto:ktly@graniteschools.org">ktly@graniteschools.org</a>
Monroe	Speech Pathologist	Julia Austin-Prime	385-646-1440	<a href="mailto:jraustin-prime@graniteschools.org">jraustin-prime@graniteschools.org</a>
Morningside	Social Worker	Jennifer Whitlock	385-646-4924	<a href="mailto:jwhitlock@graniteschools.org">jwhitlock@graniteschools.org</a>
Morningside	School Psychologist	Tanya Meegan	385-646-0058	<a href="mailto:Tmeegan@graniteschools.org">Tmeegan@graniteschools.org</a>

Moss, James E.	Social Worker	Katie Martinez	385-646-0161	<a href="mailto:ktmartinez@graniteschools.org">ktmartinez@graniteschools.org</a>
Moss, James E.	School Psychologist	Mutsumi Bramble	385-646-1423	<a href="mailto:mbramble@graniteschools.org">mbramble@graniteschools.org</a>
Oakridge	Speech Language Pathologist	Allyson Stockdale	(385) 646-4936	<a href="mailto:abstockdale@graniteschools.org">abstockdale@graniteschools.org</a>
Oakridge	Social Worker	Katelyn Bosch	385-646-4936	<a href="mailto:kbosch@graniteschools.org">kbosch@graniteschools.org</a>
Oakwood	Social Worker	Dylon Kohler	385-646-4942	<a href="mailto:dbkohler@graniteschools.org">dbkohler@graniteschools.org</a>
Oakwood	Speech Language Pathologist	Allyson Stockdale	385-646-4942	<a href="mailto:abstockdale@graniteschools.org">abstockdale@graniteschools.org</a>
Oakwood	School Psychologist	Erica Kenney	385-646-4942	unlisted
Orchard	Social Worker	Dylan Kohler	385-646-9076	<a href="mailto:dbkohler@graniteschools.org">dbkohler@graniteschools.org</a>
Orchard	Speech Language Pathologist	Kristie Carter	385-646-1881	<a href="mailto:klcarter1@graniteschools.org">klcarter1@graniteschools.org</a>
Orchard	School Psychologist	Rachel Butler	385-646-4954	<a href="mailto:rrbutler@graniteschools.org">rrbutler@graniteschools.org</a>
Penn, William	Social Worker	Melinda Riggs	385-646-4960	<a href="mailto:mjriggs@graniteschools.org">mjriggs@graniteschools.org</a>
Penn, William	School Psychologist	Stephanie Alberico	385-646-4960	<a href="mailto:salberico@graniteschools.org">salberico@graniteschools.org</a>

Pioneer	Social Worker	Amanda Duncan-Royall	385-646-8984	<a href="mailto:alduncan@graniteschools.org">alduncan@graniteschools.org</a>
Pioneer	School Psychologist	Kristin Guggisberg	385-646-5813	<a href="mailto:kguggisberg@graniteschools.org">kguggisberg@graniteschools.org</a>
Pioneer	Family Center Coordinator	Corine Keyonnie	(385) 646-1848	<a href="mailto:cdkeyonnie@graniteschools.org">cdkeyonnie@graniteschools.org</a>
Pleasant Green	Social Worker	Victoria Olson	385-646-9966	<a href="mailto:vcolson@graniteschools.org">vcolson@graniteschools.org</a>
Pleasant Green	School Psychologist	Shay Lyksett	385-646-1049	<a href="mailto:smlyksett@graniteschools.org">smlyksett@graniteschools.org</a>
Pleasant Green	Speech Pathologist	Pam Morgan	385-646-5912	<a href="mailto:pmorgan@graniteschools.org">pmorgan@graniteschools.org</a>
Plymouth	Social Worker	Hayley Frech	(385) 646-2372	<a href="mailto:hdfrech@graniteschools.org">hdfrech@graniteschools.org</a>
Plymouth	School Psychologist	Stephanie Bailey	(385) 646-9853	<a href="mailto:sabailey@graniteschools.org">sabailey@graniteschools.org</a>
Redwood	Social Worker	Madeleine Osborne-Hoole	385-646-2060	<a href="mailto:mnosborne@graniteschools.org">mnosborne@graniteschools.org</a>
Redwood	Speech Therapist	Donna Owens	(385) 646-4984	<a href="mailto:dowens@graniteschools.org">dowens@graniteschools.org</a>
Rolling Meadows	Social Worker	Kaitlin Heninger	(385) 646-4990	<a href="mailto:kkheninger@graniteschools.org">kkheninger@graniteschools.org</a>
Rolling Meadows	School Psychologist	Elizabeth A Popescue	(385) 646-4990	<a href="mailto:eapopescue@graniteschools.org">eapopescue@graniteschools.org</a>
Rolling Meadows	Spanish Parent Liaison	Graciela Castro	(385) 646-4990	<a href="mailto:gacastro@graniteschools.org">gacastro@graniteschools.org</a>

Rosecrest	Social Worker	Heather Mendiola	(385)646-5002	<a href="mailto:hmendiola@graniteschools.org">hmendiola@graniteschools.org</a>
Rosecrest	Speech Language Pathologist	Tina Whitehead	(385)646-5002	<a href="mailto:twhitehead1@graniteschools.org">twhitehead1@graniteschools.org</a>
Rosecrest	School Psychologist	Katie Young	385-646-5002	<a href="mailto:kjyoung@graniteschools.org">kjyoung@graniteschools.org</a>
Silver Hills	Social Worker	Gina Millard	385-646-0444	<a href="mailto:gmillard@graniteschools.org">gmillard@graniteschools.org</a>
Smith, Calvin	School Counselor	Diana Lehwalder	385-646-2118	<a href="mailto:dlehwalder@graniteschools.org">dlehwalder@graniteschools.org</a>
Smith, Calvin	Speech Language Pathologist	Heather Hales	(385) 646-5020	<a href="mailto:hhales1@graniteschools.org">hhales1@graniteschools.org</a>
Smith, Calvin	School Psychologist	Nicole Feigt	385-646-8092	<a href="mailto:ndfeigt@graniteschools.org">ndfeigt@graniteschools.org</a>
South Kearns	Social Worker	Corrine Johnson	385-646-2335	<a href="mailto:cpjohnson@graniteschools.org">cpjohnson@graniteschools.org</a>
South Kearns	School Psychologist	Dr. Stephan Prasad	(385) 646-5026	<a href="mailto:sprasad@graniteschools.org">sprasad@graniteschools.org</a>
Stansbury	Social Worker	Shari Harwood	385-646-5851	<a href="mailto:sharwood@graniteschools.org">sharwood@graniteschools.org</a>
Stansbury	Social Worker	Andrea Abbott	385-646-8443	<a href="mailto:jjmertlich@graniteschools.org">jjmertlich@graniteschools.org</a>
Stansbury	School Psychologist	Hayley Layton	385-646-2072	<a href="mailto:hmherrington@graniteschools.org">hmherrington@graniteschools.org</a>
Stansbury	Parent Liaison	Jennifer Harris	385-646-5032	<a href="mailto:jmharris@graniteschools.org">jmharris@graniteschools.org</a>

Taylorsville	Social Worker	Haley Schooler	385-646-8465	<a href="mailto:hlschooler@graniteschools.org">hlschooler@graniteschools.org</a>
Taylorsville	Speech Language Pathologist	Hannah Hirst	385-646-8465	<a href="mailto:hjhirst@graniteschools.org">hjhirst@graniteschools.org</a>
Taylorsville	School Psychologist	Dr. Kristin Guggisberg	385-646-8465	<a href="mailto:kguggisberg@graniteschools.org">kguggisberg@graniteschools.org</a>
Truman, Harry S.	Speech Language Pathologist	Michelle Geary	(385) 646-5044	<a href="mailto:mgeary@graniteschools.org">mgeary@graniteschools.org</a>
Truman, Harry S.	School Psychologist	Kristin Guggisberg	385) 646-5044	<a href="mailto:kguggisberg@graniteschools.org">kguggisberg@graniteschools.org</a>
Truman, Harry S.	Social Worker	Haylee Frech		<a href="mailto:hdfrech@graniteschools.org">hdfrech@graniteschools.org</a>
Upland Terrace	School Psychologist	Jessica Wassink	385-646-1193	<a href="mailto:jmwassink@graniteschools.org">jmwassink@graniteschools.org</a>
Upland Terrace	Speech Language Pathologist	Lori Krasny	385-646-1795	<a href="mailto:lekrasny@graniteschools.org">lekrasny@graniteschools.org</a>
Upland Terrace	School Psychologist	Autumn Talbott-Cisneros	385-646-1638	<a href="mailto:astalbott-cisneros@graniteschools.org">astalbott-cisneros@graniteschools.org</a>
Valley Crest	Speech Language Pathologist	Pam Tiede	<u>(385) 646-5061</u>	<a href="mailto:ptiede@graniteschools.org">ptiede@graniteschools.org</a>
Valley Crest	School Psychologist	Sedona Sieg	385-646-8671	<a href="mailto:smsieg@graniteschools.org">smsieg@graniteschools.org</a>
Vista	Social Worker	Jamie Park	385-646-1286	<a href="mailto:jdpark@graniteschools.org">jdpark@graniteschools.org</a>
Vista	Speech Language Pathologist	Rebecca Miller	385-646-5067	<a href="mailto:rmiller@graniteschools.org">rmiller@graniteschools.org</a>

Vista	School Psychologist	Sedona Sieg	385-646-8671	<a href="mailto:smsieg@graniteschools.org">smsieg@graniteschools.org</a>
Walker, Olene	Social Worker	McKenna Anderson	385-646-9826	<a href="mailto:mmanderson@graniteschools.org">mmanderson@graniteschools.org</a>
Walker, Olene	Social Worker	Emily Verdi	385-646-9826	<a href="mailto:elocascio@graniteschools.org">elocascio@graniteschools.org</a>
Walker, Olene	School Psychologist	Ashley Watkins		<a href="mailto:amwatkins@graniteschools.org">amwatkins@graniteschools.org</a>
West Kearns	Social Worker	Emily Roberts	385-646-8479	<a href="mailto:eroberts@graniteschools.org">eroberts@graniteschools.org</a>
West Kearns	Psychologist	Kate Smith		<a href="mailto:kwhancey@graniteschools.org">kwhancey@graniteschools.org</a>
West Valley	School Counselor	Nicole Baxter	385-646-5079	<a href="mailto:nbaxter@graniteschools.org">nbaxter@graniteschools.org</a>
West Valley	Social Worker	Jeff Larsen		<a href="mailto:jklarsen1@graniteschools.org">jklarsen1@graniteschools.org</a>
West Valley	School Psychologist	Bethany Ortiz	385-646-5079	<a href="mailto:bsortiz@graniteschools.org">bsortiz@graniteschools.org</a>
Western Hills	School Social Worker	Alison Murphy	385-646-5091	
Western Hills	School Psychologist	Stephen Craker	385-646-5091	<a href="mailto:scraker@graniteschools.org">scraker@graniteschools.org</a>
Whittier	Social Counselor	George Talakai	801-481-4846	<a href="mailto:gtalakai@graniteschools.org">gtalakai@graniteschools.org</a>

Woodrow Wilson	School Psychologist	McKenna Stoddard	385-646-1648	<a href="mailto:mvdewyn@graniteschools.org">mvdewyn@graniteschools.org</a>
Woodrow Wilson	Social Worker	Janessa Crandall		<a href="mailto:jkcrandall@graniteschools.org">jkcrandall@graniteschools.org</a>
Woodrow Wilson	Parent Liaison	Marwa Najjar	(385) 646-5102	<a href="mailto:msnajjar@graniteschools.org">msnajjar@graniteschools.org</a>
Woodstock	Social Worker	Laura Rogers	(385) 646-5108	<a href="mailto:lkessel@graniteschools.org">lkessel@graniteschools.org</a>
Woodstock	Speech Therapist	Nicole Chase	(385) 646-5108	<a href="mailto:njchase@graniteschools.org">njchase@graniteschools.org</a>
Woodstock	School Psychologist	Libby Fields	(385) 646-5108	<a href="mailto:aefields@graniteschools.org">aefields@graniteschools.org</a>
Wright, Gearld L.	School Social Worker	Kapono Barton	385-646-5951	<a href="mailto:dkbarton@graniteschools.org">dkbarton@graniteschools.org</a>
Wright, Gearld L.	Speech Language Pathologist	Kristy Jack	385-646-0545	<a href="mailto:kjack@graniteschools.org">kjack@graniteschools.org</a>
Wright, Gearld L.	School Psychologist	Gary Leu	385-646-8084	<a href="mailto:gleu@graniteschools.org">gleu@graniteschools.org</a>