



Housing Connect's School Resource Guide

Granite School District- High School



Table of Contents

Section One: Introduction.....	Page 2
Section Two: Determining Boundaries.....	Page 3
A. Find your School District.....	Page 3
B. Find your School.....	Page 6
Section Three: Enrollment.....	Page 9
A. Enrolling a returning student.....	Page 11
B. Open enrollment Permits.....	Page 12
Section Four: Resources.....	Page 13
A. Immunization Exemption.....	Page 13
B. Free and Reduced Lunch.....	Page 13
C. Transportation.....	Page 14
D. Fees and Waivers.....	Page 15
E. Special Education.....	Page 16
F. Before and After School.....	Page 16
Appendix: School Contact Information.....	Page 17
A. School Counselors and Social Workers.....	Page 19

Section 1: Introduction

Navigating new places and unfamiliar systems can be difficult and stressful. Housing Connect understands that you want what's best for your family. We know that education provides a strong foundation for present and future opportunities. Education plays a vital role in children's development so it is important that you as the parent, have the tools you need to support your children on their educational journey. This packet is designed to help you navigate the high school system through the School District.

If you have questions or need assistance on anything in this packet, feel free to reach out to the Youth and Family Services Manager at 801-882-5582 or cmeyers@housingconnect.org.

Section 2: Determining Boundaries

If you are new to an area or your child is just entering the school system, you may be unsure of which school they are supposed to attend. The steps below will help you determine which school district your family lives in and the schools that are assigned to those boundaries. Once you have determined your boundaries, you can decide if you want to enroll your child at their “home” school or get a permit for them to attend a school outside of those boundaries. Find information on special permits on page 12

Find your school district:

1. Go to: <https://nces.ed.gov/ccd/districtsearch/>

2. Click on the words “School & District Navigator”

IES : NCES National Center for Education Statistics

Search for Public School Districts

School & District Navigator Public School Search Data Notes/Grant IDs Help

District Information

District Name: _____ NCES District ID: _____

Street Address: _____ City: (lookup) _____

State: _____ Zip Code: _____ Distance: _____ Miles from Zip

County: (lookup) _____ Phone #: _____

Additional Characteristics

District Types:

- ☒ regular ☒ component ☒ supervisory union ☒ regional
- ☒ state ☒ federal ☒ charter ☒ other

Number of Students: _____ or more

Number of Schools: _____ or more

SEARCH TIP: If you are having difficulty finding your school, try only entering the city, state, and/or a key word in the name.

SEARCH TIP: Use the additional characteristics fields in conjunction with any of the District Information. Additional Characteristics should not be used if you have already entered the name of a school district.

Source: CCD public school district data for the 2019-2020, 2020-2021 school years

IES : NCES National Center for Education Statistics

Explore the Institute of Education Sciences

- IES
- Home
- About

IES Centers

- NCEE
- NCER

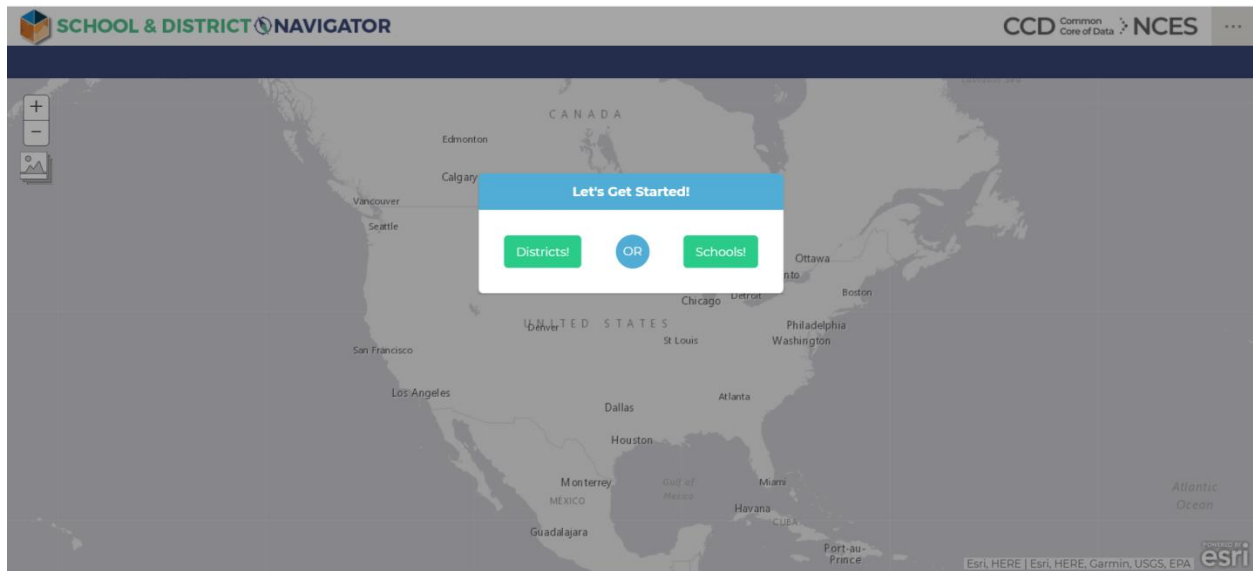
IES Policies and Standards

- ED Data Inventory
- IES Diversity Statement
- NCES Statistical Standards

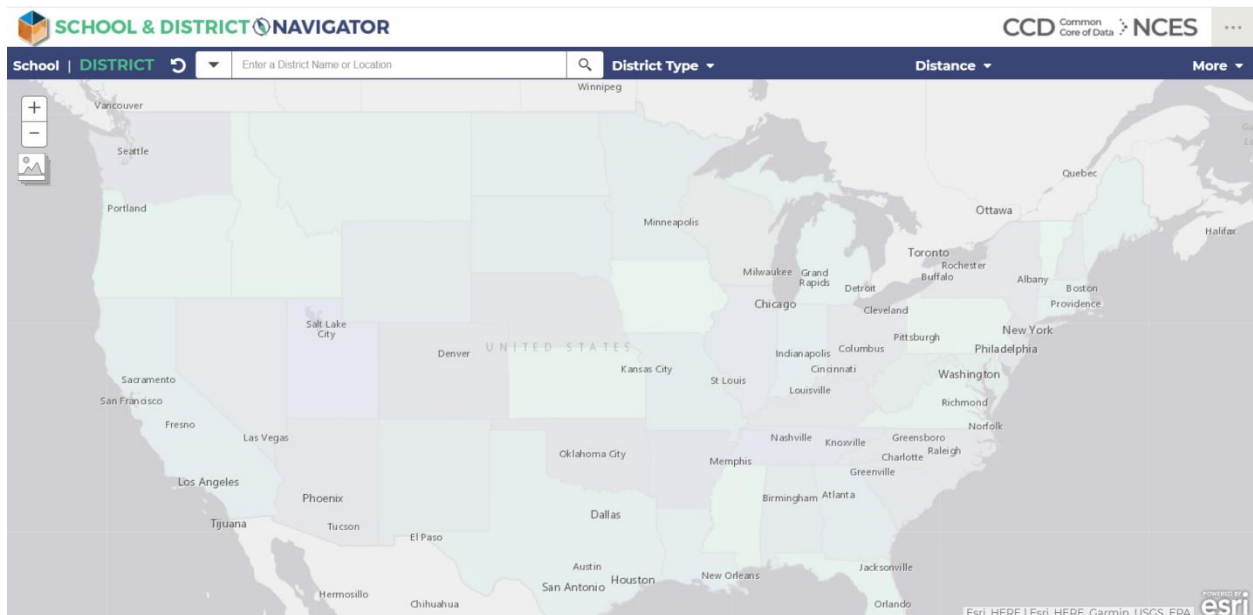
Additional Resources

- ERIC
- Sitemap
- Organizational Chart

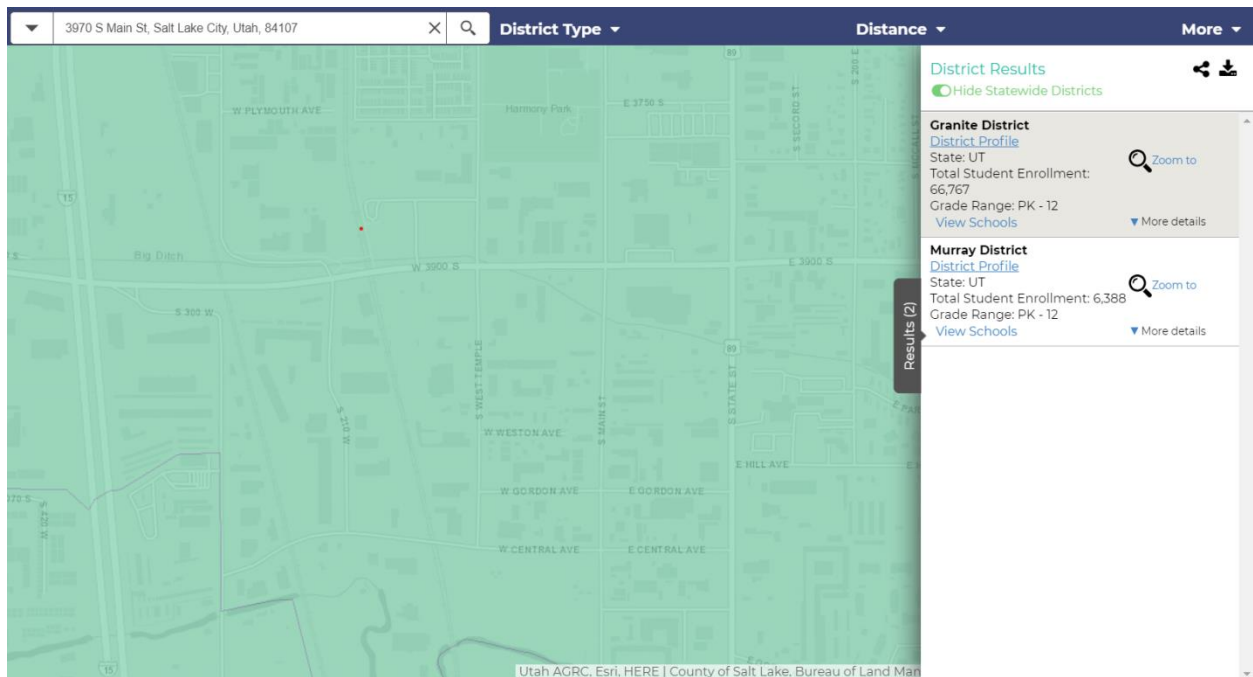
3. On the “Let’s get started tab click on the left green button labeled “Districts”



4. In the search bar, type in your home address and press the search button. (The search button is marked with a magnifying glass)



5. A box should appear on the right identifying which school district you live in.



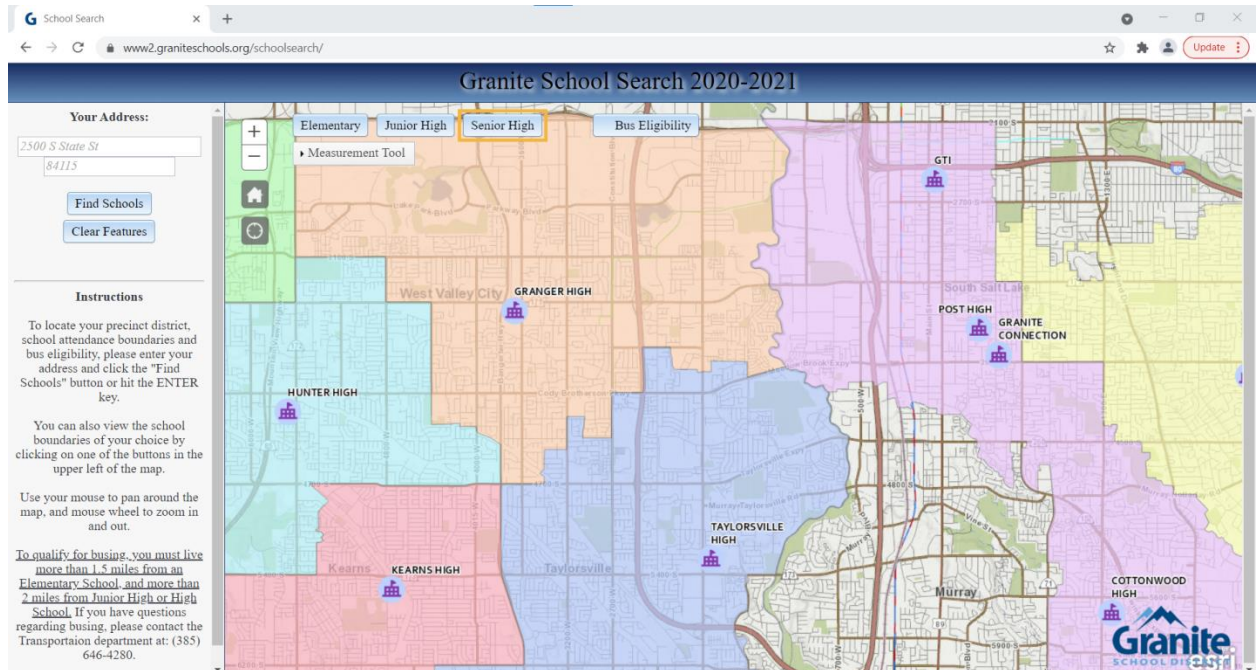
Sometimes, the website may pull up more than one eligible district, if this happens going to the potential districts websites and utilizing their school search tools is the best option.

Find your School:

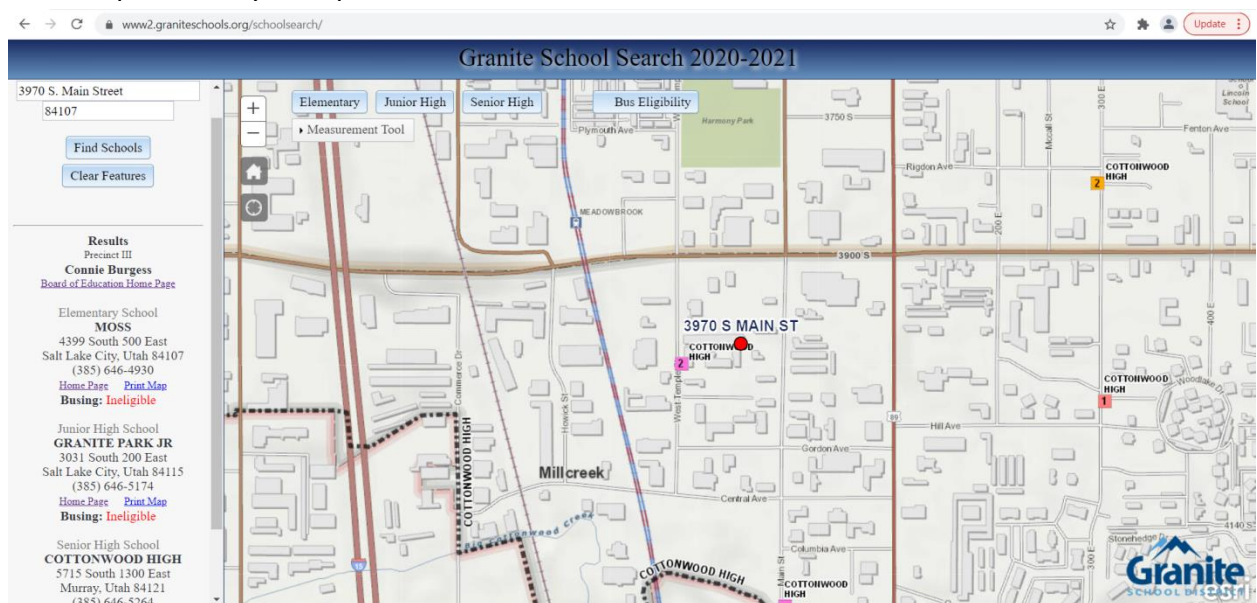
In order to determine which school boundaries you live in, open any web browser and go to:
www2.graniteschools.org/SchoolSearch/

By default you will be greeted by a tapestry of different colors, these are school boundaries.

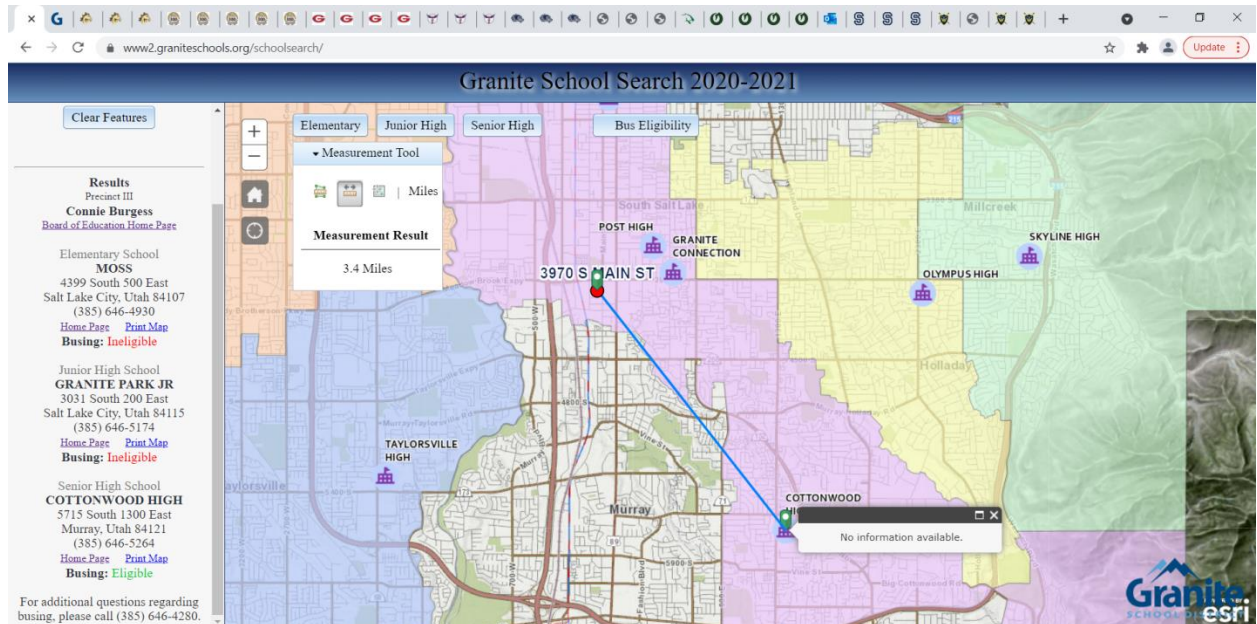
1. Click where it says Senior High. (Highlighted in Yellow)



2. In the search bars under the section entitled “Your Address”, type in your street address in the top bar and your zip code in the second bar.



- Click find schools. You may need to zoom out, in order to find the school whose boundaries you live in.



- If you are trying to see how close the schools are to where you live, there is a handy measuring tool built into the district's school search. Where you can click any two points and determine the distance in miles.

On the left side of the screen, underneath the your address box will be the results of your search, listing the elementary, middle, and high school boundaries that you live in and whether or not you are eligible to use the School's bus system as a means of transportation to and from the school.

To help you determine if you would like your child to attend their "home" School, check out www.greatschools.org.

From this website, you can input your address and see the schools closest to you by rating. The rating a school receives is the summary of the calculation of four ratings designed to show different areas of school success: student or academic progress, college readiness, equality and test scores. Student progress measures whether students are improving over time on an individual level and academic progress measures whether the school is improving as a whole using school level data. College readiness measures how well high schools are preparing their students for success in college and careers. The rating is based on high school graduation rates, SAT and ACT performance and advanced course information. The Equity Rating is designed to measure how well a school serves the academic development of disadvantaged students and is measured by progress gaps between disadvantaged students and non

disadvantaged students, how disadvantaged students are performing based on student progress, academic progress and college and career readiness. The testing score measures academic proficiency using state test scores across grades and subjects. Together the ratings make up a score from 1-10 (1 being the lowest and 10 the highest).

Section 3: Enrollment

Now that you have decided which school you would like your child to attend, it is time to enroll them.

If this is your first time enrolling at a school in the Granite School District, you will need to go to the school in person in order to initiate the registration process. Regardless if you enroll in person or online, you will need to provide the following documentation:

- proof of residency (utility bill, lease agreement)
- Birth certificate (for each enrolling child)
- Immunization Record (for each enrolled child)

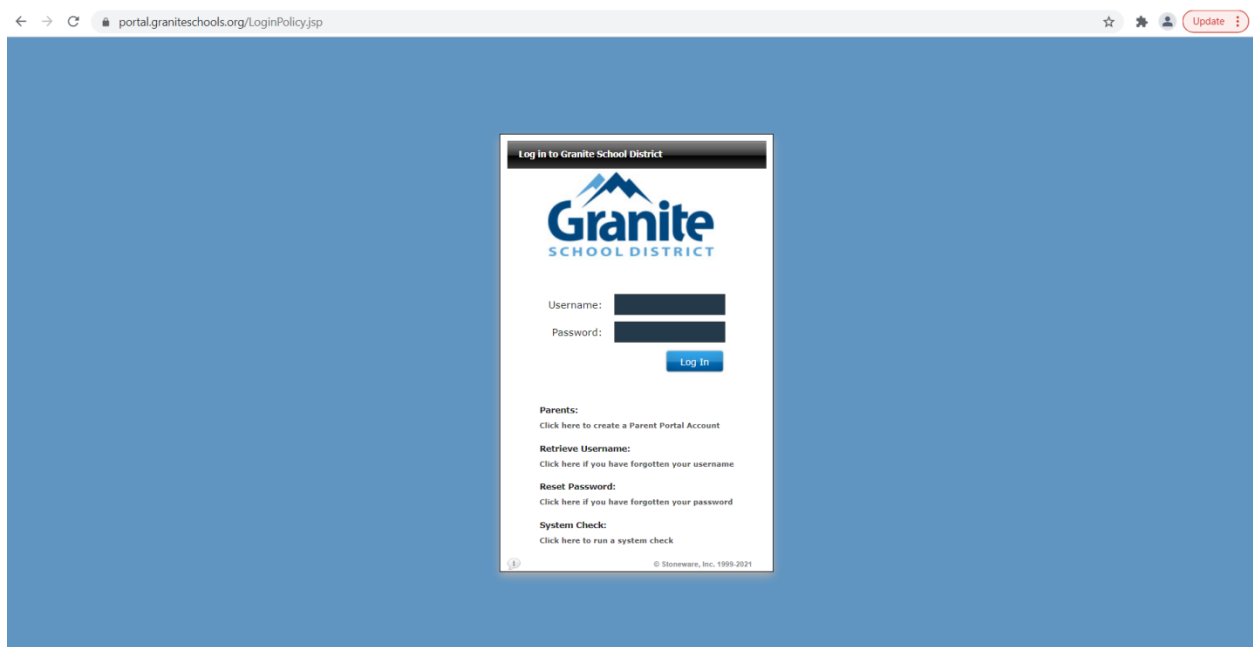
Each high school in the district has slightly different dates that they are open to enroll new students. Generally the dates for registering new students start at the last two weeks in July and extend into the first days of August. Some schools may require you to “make an appointment” to enroll. This is done by contacting that school’s office. You can find the specific dates and times for your school by consulting their website or calling them directly. The websites and phone numbers for contacting the schools are listed starting on page 18.

Parent Portal:

After your student is enrolled in a school, and you have their student ID number, you can create a parent portal account. The Parent Portal will allow you to access information about all of your students and their schools including future registration access, payment and fee waivers, grade and attendance information as well as contact information for teachers.

In order to create a parent portal account, you must have students already enrolled in a school within the Granite School District.

1. Open any web browser
2. In the search bar type in: “portal.graniteschools.org”

A screenshot of a web browser displaying the login page for the Granite School District Parent Portal. The browser's address bar shows the URL "portal.graniteschools.org/LoginPolicy.jsp". The page has a blue background. In the center, there is a white box containing the Granite School District logo (a mountain range with the word "Granite" in blue and "SCHOOL DISTRICT" in smaller blue letters below it). Below the logo are two input fields labeled "Username:" and "Password:". To the right of the password field is a blue "Log In" button. Below these fields, there are four sections of links: "Parents: Click here to create a Parent Portal Account", "Retrieve Username: Click here if you have forgotten your username", "Reset Password: Click here if you have forgotten your password", and "System Check: Click here to run a system check". At the bottom of the white box, there is a small copyright notice: "© Stoneview, Inc. 1999-2021".

3. Click create a parent portal account, you will need an email address and at least one of your children’s student ID numbers.

4. Fill out the form and click create account.

The screenshot shows a web browser window with the address bar displaying "portalaccount.graniteschools.org/AccountRegistrationForm". The Granite School District logo is at the top left. The main heading is "Parent Portal Registration". Below the heading, there is explanatory text about the Parent Portal's purpose and the importance of accurate information. The registration form includes the following fields: *Contact First Name, *Contact Last name, *Email, *Student ID, *Student Birth Date (with a date picker icon), and *Desired User Name. Each field is represented by a text input box.

5. You will be sent an email that allows you to verify your account and access the system.

Registering a Previously Enrolled Student:

Your child's school may be participating in online registration via the Parent Portal here are the steps to follow in order to enroll.

1. Go to <https://portal.graniteschools.org>
2. Type in the username and password for your Parent Portal Account and click login.
3. Once logged in click on the icon "Registration"
4. A new tab will open, if your school is participating in online registration you will see all students attached through your parent portal for the upcoming school year.
5. On the screen you will see a list of district documents below each student name and ID, some school related forms that require a signature, and any other forms that need to be completed and then uploaded separately.
6. Click on any documents that say required, when you click on the form a preview of the document will become available, if everything is correct, click on the button "Accept and Sign".

If the school has requested an external website you will only see the name of the external document highlighted in blue. You will need to click on the words of the document and complete what they are asking. Then come back and click the "Accept and Sign" button.

7. Once you have signed a document, you will see a check mark on the far right of the row indicating that the document has been signed.
8. After signing all district and school documents and paying any associated fees, you will be able to view your student's schedule.
9. In addition to viewing your schedule you can apply for fee waivers through the online registration process.

Open Enrollment:

If you want to enroll your children in a school outside of your home's boundaries, you will need to visit the school's main office in order to fill out an open enrollment application.

Open enrollment applications are accepted during two windows:

- December 1st through the 3rd Friday in February is the early enrollment period, and gives you the highest chance of acceptance
- After the 3rd Friday in February: Permits are considered based on the staff to student ratios, on a first come first serve basis

Once an application has been accepted, you do not need to reapply each year. You only need to reapply when your child has moved on from one level of schooling (i.e. from elementary school to middle school or from middle school to high school), your child is expelled or suspended, or the District determines that enrollment has exceeded the capacity of that school.

If you enroll at a school outside of your boundaries, you will be responsible for transporting your children to and from the school. **The school district does not provide bussing for students enrolled in school's outside of their boundaries.**

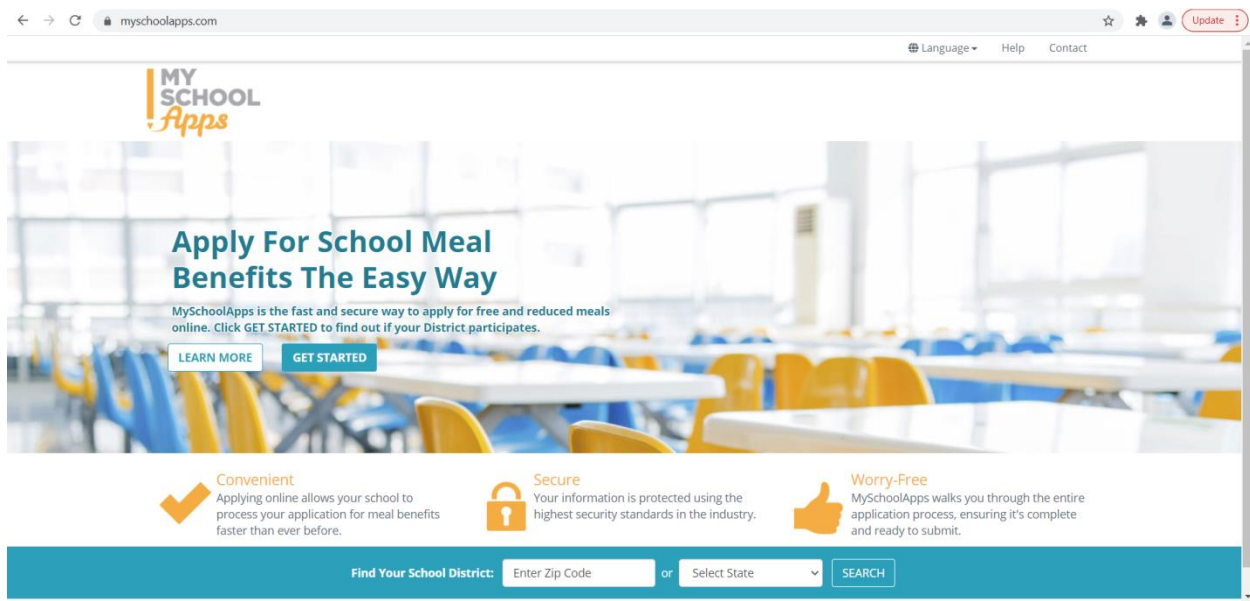
Section 4 Resources:

Now that you child(ren) are enrolled, there are resources that may be available to you through Granite School District:

Immunization exemptions: To receive a vaccination exemption form, the legally responsible individual who claims the exemption for the student must complete the online immunization education module. The education module can be accessed by going to: <https://immunize.utah.gov/immunization-education-module/>. After the successful completion of the module you will be emailed a vaccination exemption form that you need to fill out and turn into the school.

Free and Reduced Lunch: Applications for free and reduced meals are able to be filled out online up to 30 days in advance of the start of the new school year. Fill out one application per family. If you do not have internet access, you can also go to your child's school in order to obtain an application. The Federal eligibility for Free and Reduced Meals changes each school year. Because of these annual changes, a new application must be submitted each year.

To apply online go to: <https://www.myschoolapps.com/>



Click on the blue “Get Started Box”

For questions concerning the application process or free and reduced meals contact: 385-646-5506

Transportation: To qualify for busing, you must live inside of the school boundary that you have enrolled in and live more than 2 miles from the High School. **In order to obtain a school bussing schedule, you must contact your school directly.**

If transportation is an issue, the UTA may have routes that will get your children closer to their school. You can buy monthly passes for children 6-17 (or those still attending high school) for reduced rates. The passes can be bought online at: <https://www.rideuta.com/Fares-And-Passes/Buy-A-Pass>. Look for the “Youth Monthly Pass” for local busses and TRAX access and the “Premium Youth Monthly Pass” if your children also need access to the FRONTRUNNER.

Fees:

The following table lists the maximum amounts that may be charged per pupil for each activity, class, or athletics participation. **Actual Fees are determined by the local schools.**

DRAFT 3/9/22

Granite School District

2022-2023 Senior High School Fee Schedule

Fee Amounts and Spend Plans - All fees listed on this schedule are the maximum amounts approved by the Board of Education that a school may charge per pupil for participation in the named activity, class, group, or team. The types of expenditures funded with student fees include ancillary personnel costs, educational services, employee training, professional services, technical services, student travel, advertising services, printing services, activity and student supplies, student food, technology supplies, equipment and facility enhancements, and club dues. Planned expenditures vary by program and school due to the unique needs and specific plans made at each school. Prior to registration, the fee amounts and associated spend plans approved by the principal for each program at each school are published online at schoolfees.graniteschools.org. Parents are encouraged to refer to their school's fee schedule for detailed fee and spend plan information. For school activities that involve tryouts, participants must be selected before fees are assessed.

General School Program Fees		Maximum amounts that may be charged	Maximum amounts that may be charged
Basic Registration (All students)		\$65.00	Graduation (Graduating students) \$25.00
School Sponsored Admission Fee /Fundraiser - In addition to the general fees above, the following fees may be charged for specific event as applicable.			
Stomps (Per student)		\$5.00	School Plays, Concerts and Musicals \$10.00
Dances (Per couple)		\$25.00	Other Admissions to Off Campus Events (Not including applicable sales tax) \$60.00
Graduation Party		\$50.00	School Level Banquets \$20.00 \$25.00
UHSAA Admissions - Activities sponsored by Utah High School Activities Association (UHSAA) may not exceed limits established by the Association.			
Curricular Course Fees (Per semester course)		Maximum amounts that may be charged	Maximum amounts that may be charged
General Course Fees			
Visual Art		\$50.00	Music (Non performing groups) \$25.00 \$15.00
<i>Includes Craft, Drawing, Painting, Photography, Sculpture, Art History, etc.</i>			Instrument Rental (1st instrument) \$75.00
Career & Technical Education		\$40.00	Instrument Rental (Per additional instrument) \$15.00
<i>Includes areas of Agriculture, Business, FACS, Health Science, Info Tech,</i>			Psychology \$5.00
Career & Technical Education		\$40.00	Physical Education
<i>Includes areas of Agriculture, Business, FACS, Health Science, Info Tech,</i>			
<i>Skilled & Technical, and Technology & Engineering</i>			Psychology \$5.00
Dance		\$15.00	Physical Education
Drama / Stage Crew		\$15.00	On-campus course \$10.00
Driver's Education		\$140.00	Off-campus course \$80.00
English		\$10.00	Science \$15.00
International Baccalaureate (IB)		\$25.00	<i>Includes Biology, Chemistry, Earth Science, Physics, etc.</i>
Specific Item Course Fee - In addition to the course fees above, the following fees may be charged for specific items as applicable.			Self Paced Online Course (Charge per .25 units of credit) \$30.00
Equipment Rental (Other than musical instrument)		\$35.00	Credit Recovery (As applicable) (Charge per .25 units of credit) \$45.00
			Textbook for Concurrent Enrollment / AP / IB Courses \$115.00
			Workbook/License Fee \$50.00
Co-curricular / Extracurricular Course and Activities Fees			
(Per school year. Includes all potential course fees and fundraising. Planned Group Fundraising may reduce the out of pocket costs of the activity but is not guaranteed.)			
Sports Fees		Maximum amounts that may be charged	Maximum amounts that may be charged
Baseball		\$1,000.00	College Readiness \$60.00
Basketball		\$900.00	<i>Includes AVID, Latinos in Action, People of the Pacific and similar courses</i>
Cheer		\$1,700.00	Test Review Prep (Not for credit) \$30.00
Cross Country		\$125.00	Dance Performing Groups \$750.00
Drill Team		\$2,000.00	Debate \$250.00
Football		\$800.00	Granite Youth Symphony \$250.00
Golf		\$500.00	JROTC \$60.00
Lacrosse		\$800.00	Music Performing Groups \$150.00
Soccer		\$450.00	<i>Includes Band, Orchestra, Madrigals, Show & Concert Choir</i>
Soccer		\$450.00	<i>Includes Band, Orchestra, Madrigals, Show & Concert Choir</i>
Softball		\$1,000.00	Tuxedo additional fee (If required) \$225.00
Swimming		\$300.00	Dress additional fee (If required) \$175.00
Tennis		\$400.00	Instrument Rental (If required) \$75.00
Track		\$200.00	Student Government / Club Officers \$500.00
Volleyball		\$550.00	Theatre / Musical Production (Per production for stage performers) \$150.00
Wrestling		\$500.00	Club Dues (Non-curricular clubs are not subject to fee waiver)
			School Clubs \$50.00
			Additional State / National Membership (Cost of membership) \$35.00
			Coach / Advisor Run District Camps \$75.00
Overnight Student Travel (Per trip)			Maximum amount that may be charged
(Maximum fee includes all potential fundraising)			
Overnight Student Travel (Within approved geographical region)			\$1,200.00 \$1,700.00
Non-Overnight Student Travel (3 days maximum)			\$150.00 per day
All requests for Overnight Student Travel must be approved by the Principal, Director and Assistant Superintendent.			

* Please note: The fees schedule above is the final draft for the school year 2022-2023.

specific fee(s) from above. For students who attend a charter school and participate in extracurricular activities, the charter school of enrollment must also pay a one-time annual school participation fee of \$75.00 to the school where the student is participating in the activity. Such students are not subject to the basic registration fee.

This Fee Schedule was approved by the Granite Board of Education on December 1, 2020.

Fee Waivers: When enrolling at any school in the Granite School District you are able to fill out the application for a fee waiver. You will need to bring either: the three most recent pay stubs for everyone working in the household, a letter from Workforce Services which states you are on food stamps, or your last year's tax return. This form is included in the back of this pamphlet. If your application is accepted all of the fees mentioned above will be waived.

Special Education Resources:

Section 504 is the part of the Rehabilitation Act of 1973 which applies to persons with disabilities. Section 504 is a civil rights act protecting the civil and constitutional rights of persons with disabilities.

Section 504 states: "No otherwise qualified individual with a disability ... shall, solely by reason of her or his disability, be excluded from the participation in, be denied the benefits of, or be subjected to any discrimination under any program or activity receiving Federal financial assistance."

An IEP is an "Individualized Education Plan" It is a legal document that identifies the special education instruction, support and services to help your child succeed in school.

For Special Education Services you may ask any teacher, administrator or counselor to request special educational services or an evaluation.

Once you have made the request, they will provide you with any paperwork and directions to continue the process.

Utah Parent Center Information

<https://utahparentcenter.org/projects/districts/granite/>

Parent Consultant Serving Families in Granite School District

Email: cynthia@utahparentcenter.org

Phone Number: 385-646-4190 or 801-833-3825

The Utah Parent Center has partnered with Granite School District to provide free assistance to families of children with special educational needs.

If your child has special needs, so do you! The Parent Consultant serving families in Granite School District offers: Training, Information, Referrals and Assistance.

These services are offered to parents through the provision of one-on-one consultations by phone or in person, and group workshops and presentations.

Before School Programs:

Cottonwood, Cyprus, Granger, Granite Connection, Hunter, Kearns, Olympus, Skyline, and Taylorsville all serve breakfast before school starts. Breakfast is typically served 45-30 minutes before school starts, but you can confirm with your child's school the exact time.

After School Programs:

Most schools in the district have multiple after school opportunities be they athletic, artistic, or academic in nature. The best ways to find out about them are to check your school's website and to keep an eye out for information brought home by your children. The school's websites are listed starting on page 17.

Appendix I: School Contact Information

Holladay High Schools

School Name	Address	Phone Number	Website
Olympus	4055 South 2300 East, Holladay , UT 84124	385- 646-5400	https://schools.graniteschools.org/olympushigh/

Kearns High Schools

School Name	Address	Phone Number	Website
Kearns	5525 S Cougar Lane (4800 W), Kearns, UT 84118	385-646-5380	https://schools.graniteschools.org/kearnshigh/

Magna High Schools

School Name	Address	Phone Number	Website
Cyprus	8623 West 3000 South , Magna , UT 84044	385- 646-5300	https://schools.graniteschools.org/cyprushigh/

Murray High Schools

School Name	Address	Phone Number	Website
Cottonwood	5715 South 1300 East, Murray, UT 84121	385-646-5266	https://schools.graniteschools.org/cottonwoodhigh/

Salt Lake City High Schools

School Name	Address	Phone Number	Website
Granite Connection	501 East 3900 South, Salt Lake City , UT 84107	385-646-5435	https://schools.graniteschools.org/connectionhigh/
Skyline	3251 East 3760 South, Salt Lake City, UT 84109	385-646-5420	https://schools.graniteschools.org/skylinehigh/

Taylorsville High Schools

School Name	Address	Phone Number	Website
Taylorsville	5225 S Redwood Road (1700 W) , Taylorsville , UT 84123	385-646-5455	https://schools.graniteschools.org/taylorsvillehigh/

West Valley High Schools

School Name	Address	Phone Number	Website
Granger	3580 S. 3600 W., West Valley City, UT 84119	385-646-5320	https://schools.graniteschools.org/grangerhigh/
Hunter	4200 S 5600 WWest Valley City, UT 84120	385-646-5360	https://schools.graniteschools.org/hunterhig

Appendix 2: School Counselors, Social Workers, and Psychologists

Each school in Granite school district has personnel specifically assigned to help you and your children establish healthy development and create positive boundaries around social, emotional and psychological health. These staff include social workers, school psychologists, speech language pathologists, and more.

Social workers and psychologists can provide counseling while providing social, emotional, and psychological support, they also help with IEP's and other accommodations, and can give referrals to outside resources.

Speech language pathologists help students with communication delays. They can help your children with literacy, fluency, articulation, and social communication issues.

Guidance Counselors help with academic and behavioral challenges.

Below is a list of all of the service providers within the high schools in the district so you can easily contact them as needed. If no phone number is listed, contact your school's main office to determine the best way to reach these resources, or you can reach out to them via email.

School	Title	Name	Phone Number	Email
Cottonwood	Social Worker	Alisa Webb	385-646-5265	awebb2@graniteschools.org
Cottonwood	School Psychologist	Mutsubi Bamble	385-646-5265	

Cottonwood	Counselor, (D-K Last Names)	Amanda Calton	385-646-5265	acalton@graniteschools.org
Cottonwood	Counselor, (A-C Last Names)	Rebecca Berbert	385-646-5265	rberbert@graniteschools.org
Cottonwood	Counselor, (L-Q Last Names)	Rachel Stoddard	385-646-5265	rdstoddard@graniteschools.org
Cottonwood	Counselor, (R-Z Last Names)	Teresa Olsen	385-646-5265	tolsen@graniteschools.org
Cyprus	Social Worker	Valerie Liggett	385-646-1745	vliggett@graniteschools.org
Cyprus	Social Worker	Rebecca Oppermann	(385) 646-0156	raoppermann@graniteschools.org
Cyprus	School Psychologist	Sedona Sieg	385-646-8671	smsieg@graniteschools.org
Cyprus	Counselor, (A-Can Last Names)	Jodi Heiner	385-646-6214	jheiner@graniteschools.org
Cyprus	Counselor, (En-Hep Last Names)	Carson Checketts	(385) 646-6229	ccchecketts@graniteschools.org
Cyprus	Counselor, (Or-R Last Names)	Sara Fisher	(385) 646-6213	sfisher1@graniteschools.org
Cyprus	Counselor, (S-So+CYMC Last Names)	Marie Buchanan	385-646-6219	mjbuchanan@graniteschools.org
Cyprus	Counselor, (Her-Lo Last Names)	Linda McGrath	385-646-6230	lamcgrath@graniteschools.org
Cyprus	Counselor, (Car-El+ ML 1, 2 Last Names)	Babi Yazzie	385-646-9228	amyazzie@graniteschools.org

Cyprus	Counselor, (Lu-Ol Last Names)	Chris Baker	385-646-6213	csbaker@graniteschools.org
Cyprus	Counselor, (Sp-Z Last Names)	Melissa Tuckett	385-646-6231	mtuckett@graniteschools.org
Granger	Social Worker	Mindy Leonard	385-646-8146	mkleonard@graniteschools.org
Granger	Social Worker	Paola Martinez	385-646-9271	pescobedo-delgado@graniteschools.org
Granger	School Psychologist	Taylor Arney	385-646-5336	tmarney@graniteschools.org
Granger	School Psychologist	Laura Bruuning		lmbruuning@graniteschools.org
Granger	Counselor, (A-Bo Last Names)	Brandy Oliver	385-646-6396	bmoliver@graniteschools.org
Granger	Counselor, (Bo-Da Last Names)	Shena Switzer	385-646-6396	smswitzer@graniteschools.org
Granger	Counselor, (De-Gom Last Names)	Monica Candia	385-646-6366	mdcandia@graniteschools.org
Granger	Counselor, (Gon-J Last Names)	Mrs. Seewer	385-646-6315	akseewer@graniteschools.org
Granger	Counselor, (Gb-Ja Last Names)	Uote Havea	385-646-6390	uhavea@graniteschools.org
Granger	Counselor, (K-Marti Last Names)	Laural Takashima	385-646-6310	ltakashima@graniteschools.org
Granger	Counselor, (Marti-On Last Names)	Laura Sherman	385-646-6312	lrsherman@graniteschools.org

Granger	Counselor, (Op-Rod Last Names)	Yvonne Fortune	385-646-6364	yfortune@graniteschools.org
Granger	Counselor, (Rodr-Ta Last Names)	Samantha McMorrow	385-646-6314	sgmcmorrow@graniteschools.org
Granger	Counselor, (Te-Z Last Names)	Jim Babcock	385-646-6313	jdbabcock@graniteschools.org
Granger	Social Emotional Counselor	Keisha Anderson	385-646-6391	kcanderson2@graniteschools.org
Granite Connection	School Social Worker	Emilie Havili		ehavili1@graniteschools.org
Granite Connection	Counselor, (A-L Last Names)	Chelsea Davis	385-646-6006	cmdavis@graniteschools.org
Granite Connection	Counselor, (M-Z Last Names)	Theressa Perese	385-646-6043	tlperese@graniteschools.org
Hunter	Social Worker	Brenda Alley	385-646-5361	balley@graniteschools.org
Hunter	School Psychologist	Dr. Jared Benware	385-646-5361	jbenware@graniteschools.org
Hunter	Counselor, (A-Car Last Names)	Ian Bobbermin	385-646-5361	ibobbermin@graniteschools.org
Hunter	Counselor, (Cas-Gap Last Names)	Mandy Tran	385-646-5361	crtravis@graniteschools.org
Hunter	Counselor, (Gar-Ji Last Names)	Pou Kaveinga	385-646-5361	tofahengaue@graniteschools.org
Hunter	Counselor, (Jo-Mem Last Names)	Stephanie Doyle	385-646-5361	sdoyle@graniteschools.org

Hunter	Counselor, (Men-Q Last Names)	Andrea Palmer	385-646-5361	apalmer3@graniteschools.org
Hunter	Counselor, (R-So Last Names)	Brett Joos	385-646-5361	brjoos@graniteschools.org
Hunter	Counselor, (Sp-Z Last Names)	Jennifer Benally	385-646-5361	jbenally@graniteschools.org
Kearns	Counselor (Too-Z Last Names)	Tamra Arnesen	385-646-6625	tjarnesen1@graniteschools.org
Kearns	Social Worker	Taylor Jackson	385-646-2324	twjackson@graniteschools.org
Kearns	School Psychologist	Jared Benware	385-646-0150	jbenware@graniteschools.org
Kearns	Counselor, (A-Car Last Names)	Fred Falcon	385-646-6613	wcfalcon@graniteschools.org
Kearns	Counselor, (Cas-Garc Last Names)	Cheri Jacobson	385-646-6614	cjacobson1@graniteschools.org
Kearns	Counselor, (Gard-Kim Last Names)	Hannah Scherbel	385-646-0534	hmscherbel@graniteschools.org
Kearns	Counselor, (Gr-Li Last Names)	Brian Barnum	385-646-6621	bdbarnum@graniteschools.org
Kearns	Counselor, (Kin-Moo Last Names)	Keleni Mateaki	385-646-6699	klmateaki1@graniteschools.org
Kearns	Counselor, (Pet-Roma Last Names)	Rebecca Gailey	385-646-1647	rjgailey@graniteschools.org
Kearns	Counselor, (Os-Rem Last Names)	Mandy Tran	385-646-8455	mhtran@graniteschools.org

Kearns	Counselor, (Rome-Ton Last Names)	Coty Steele	385-646-6634	cmoreno@graniteschools.org
Kearns	Counselor, (Mor-Per Last Names)	LaFlora Lausii	385-646-6610	llausii@graniteschools.org
Olympus	Social Worker	Denell Mangone	385-646-1022	dmangone@graniteschools.org
Olympus	School Psychologist	Joshua Dunn	385-646-8277	jtdunn@graniteschools.org
Olympus	Counselor, (A-B Last Names)	Katelyn Egger	385-646-5401	keegger@graniteschools.org
Olympus	Counselor, (C-F Last Names)	Cheyenne Terry	385-646-5401	cnterry@graniteschools.org
Olympus	Counselor, (Go-Kin Last Names)	Lauren Bleggi	385-646-5401	lableggi@graniteschools.org
Olympus	Counselor, (G-Ji Last Names)	Nathan Brannon	385-646-5401	nrbrannon@graniteschools.org
Olympus	Counselor, (Jo-Mi Last Names)	Christine Martinez	385-646-5401	cdmartinez@graniteschools.org
Olympus	Counselor, (Mo-Ri Last Names)	Alicia Money	385-646-5401	acmoney@graniteschools.org
Olympus	Counselor, (Ri-Sm Last Names)	Aryn Reeves	385-646-5401	akreeves@graniteschools.org
Olympus	Counselor, (Sn-Z Last Names)	Craig Sudbury	385-646-5401	clsudbury@graniteschools.org
Skyline	School Psychologist	Victoria Hatton	385-646-5421	vrhatton@graniteschools.org

Skyline	Social Worker	Taylor Hull	385-646-5421	tkhull@graniteschools.org
Skyline	Counselor, (A-C Last Names)	Bronson Gray	385-646-5421	bdgray@graniteschools.org
Skyline	Counselor, (D-Hoz Last Names)	Alisha Johnson	385-646-5421	ajjohnson@graniteschools.org
Skyline	Counselor, (Hp-Mi Last Names)	Jill Hinckley	385-646-5421	jkhinckley@graniteschools.org
Skyline	Counselor, (Mh-Sec Last Names)	Amanda Keckley	385-646-5421	bcbartholomew@graniteschools.org
Skyline	Counselor, (Sed-Z Last Names)	Kylie Joyce	385-646-5421	kjoyce@graniteschools.org
Skyline	Counselor, for 10th-12th grade IB students	Julie Ann White	385-646-5421	jawhite3@graniteschools.org
Skyline	Counselor, for 9th grade IB students	Angela Wheeler	385-646-5421	awheeler1@graniteschools.org
Taylorsville	Social Worker	Charles Huff	385-646-1406	cahuff@graniteschools.org
Taylorsville	School Social Worker	Sara Spencer	385-646-8291	sspencer@graniteschools.org
Taylorsville	Counselor, (9th Grade A-L Last Names)	Maria Garcia	385-646-5456	mtgarcia@graniteschools.org
Taylorsville	Counselor, (9th Grade M-Z Last Names)	Danielle Natter	385-646-5456	dnatter@graniteschools.org
Taylorsville	Counselor, (9th Grade Cb-Fi)	Jennie Jentzsch	385-646-5456	jljentzsch@graniteschools.org

Taylorsville	Counselor, (10th-12th grade A-Ca Last Names)	Eric Timpson	385-646-5456	etimpson@graniteschools.org
Taylorsville	Counselor, (10th-12th Hf-Mar Last Names)	Kim Watts	385-646-5456	kwatts@graniteschools.org
Taylorsville	Counselor, (10th-12th grade Mat-Pes Last Names)	Henry Christensen	385-646-5456	htchristensen@graniteschools.org
Taylorsville	Counselor, (10th-12th grade Pes-Sm Last Names)	Daniel Rich	385-646-5456	dbrich@graniteschools.org
Taylorsville	Counselor, (10th-12th grade Sn-Z Last Names)	Gretel Evans	385-646-5456	gevans@graniteschools.org